

Landing gear frame cracks

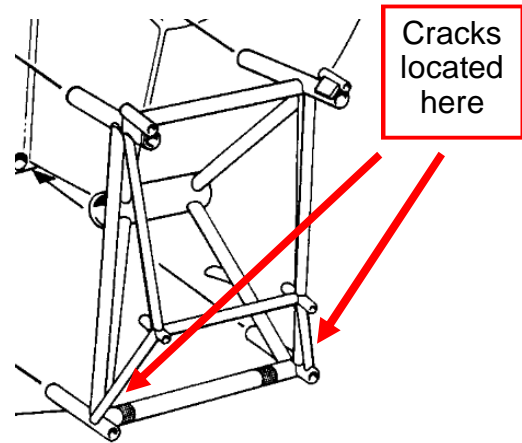
Europa XS monowheel - N262WF.

Hobbs hours = 1024

No. of landings = 1490

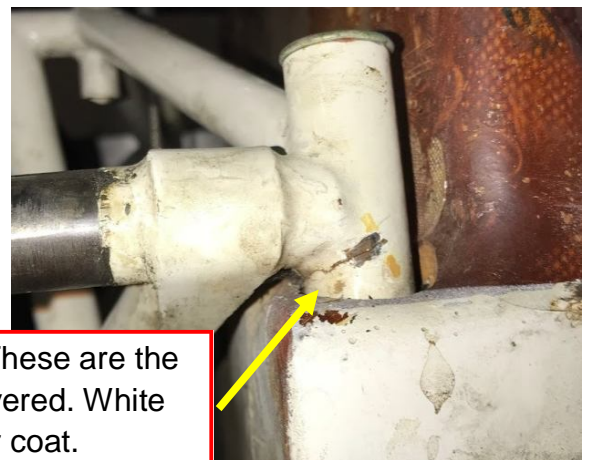
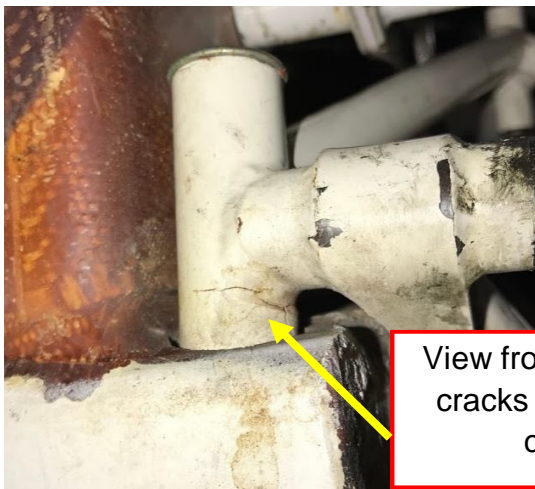
John Wigney, Mooresville, North Carolina.

October, 2018.

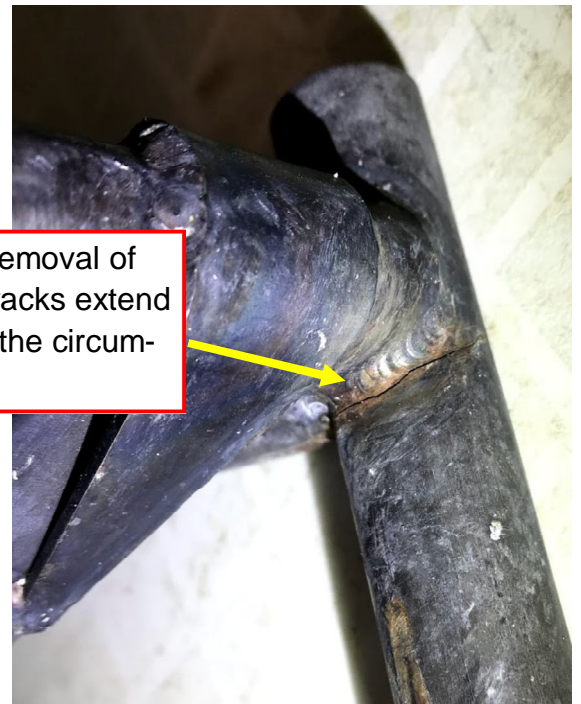


Starboard side

Port side



View from underneath. These are the cracks when first discovered. White coating is powder coat.



Same cracks after removal of frame from a/c. The cracks extend around 40 to 50% of the circumference.