

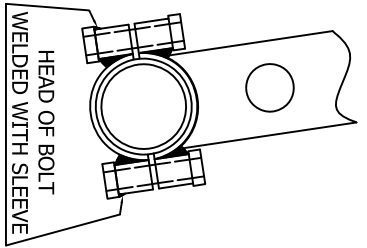
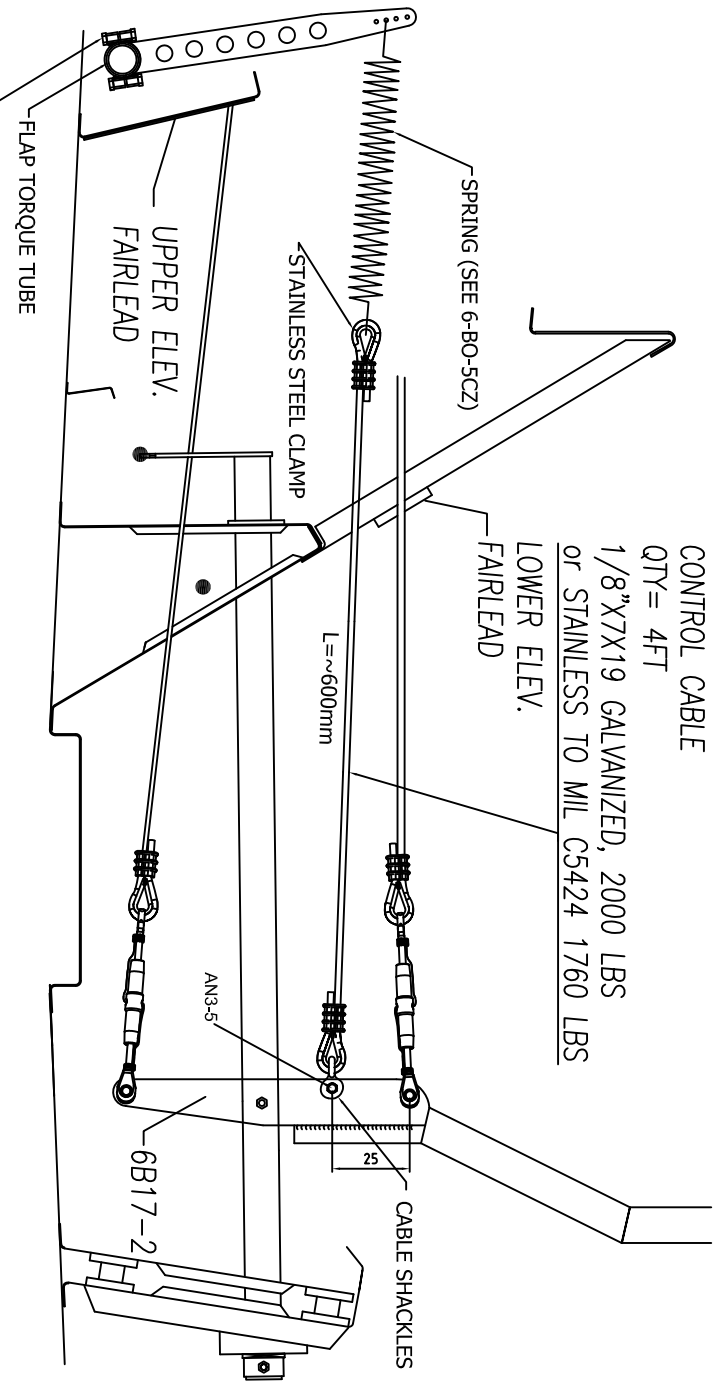
CONTROL CABLE
 QTY = 4FT
 1/8"X7X19 GALVANIZED, 2000 LBS
 or STAINLESS TO MIL C5424 1760 LBS



1/8" CABLE THIMBLE
 (AN100-4)
 F-15-204 QTY=2

CABLE SHACKLES
 AN115-21
 QTY=1

AN3-5 BOLT (1 REQ'D)
 AN960-10 WASHER (1 REQ'D)
 AN310-3 CASTLE NUT (1 REQ'D)
 AN380-2-2 COTTER PIN (1 REQ'D)
 1/8" ZINC PLATED NICOPRESS SLEEVE (2 REQ'D)



FLAP TORQUE TUBE
 AN3-10A (4 REQ'D)
 AN-365-3-10-32 (4 REQ'D)
 AN-960-10 (4 REQ'D)

CZ.A.W.
 CH 601XL

TRIMBOOSTER

6-B0-4CZ

REV.
 18.3.2005