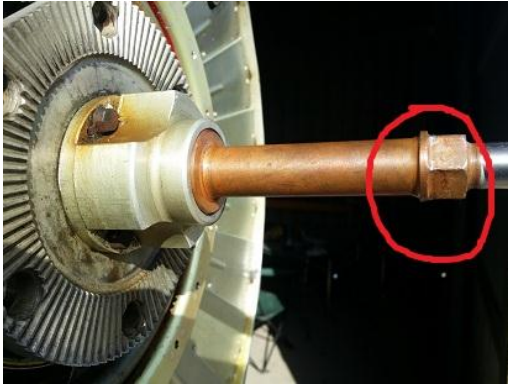


Removing Gill Framework

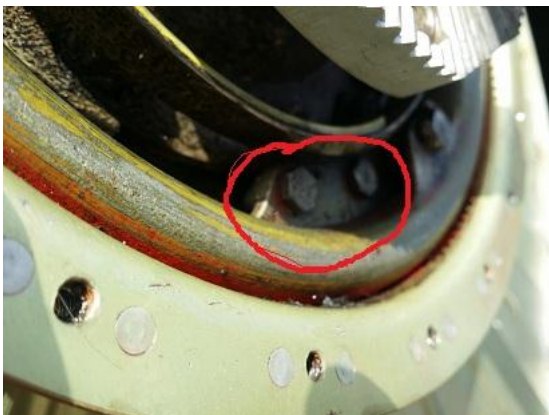
1. **Remove Oil Tube.** Look at shaft of your oil tube. You will see a nut at the base of the polished tip that pushes oil into and out of the piston in the prop hub. Take the appropriate Mexican Speed wrench (adjustable) to loosen it. Careful, there is washer at the base. Put a clean rag in you prop shaft to keep FOD out.



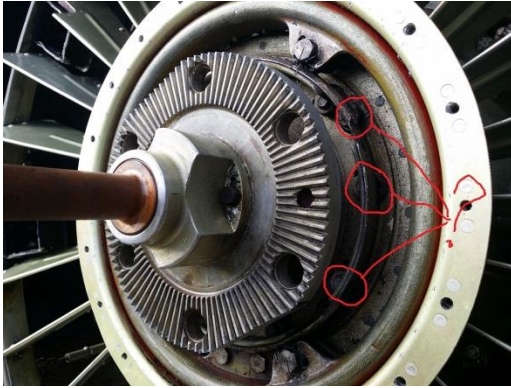
2. **Remove Slotted Safety Wire Screws.** Remove all of those slotted safety wire screws around the ring that supported the deflection plate at the base of the hub that you have already removed.



3. **Remove Lever Bolts.** At the 0530 position you will see two ~8 mm bolts that on the back side attaches to a lever that opens and closes you gills. That all has to come off.



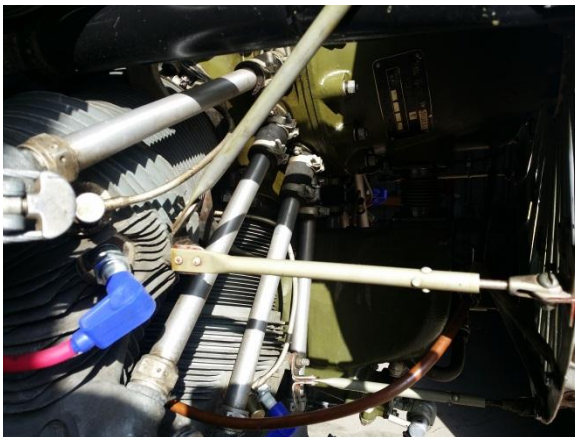
4. **Loosen Nose Case Bolts.** Look around the base of louvers there are ? 11 mm bolts that bolt the ring to the nose case. Slowly loosen them all together so you are going loosen one a little, move to the next one, then the next one until you have all the walked around the ring. That is because over the top of the bolts is a slot in the perpendicular ring that prevents the bolts from backing completely out if they loosened in flight.



5. **Remove Cooling Trumpets.** You also have to take those cooling trumpets off.



6. **Remove Outer Ring Braces.** You will have to take the outer ring braces loose that attach the ring to the nine cylinders. Do not lose those spacers at the base of those L brackets that mounts them to the stud on the cylinders. They are impossible to find replacements.



7. **Remove Louvers from Prop Hub.** Now that all of that is disconnected you can remove the louvers from the prop hub. Look at your prop hub. You will see **two flat sides on an otherwise round flange**. You will basically lift up the base ring behind the flange over one of those flat sides in the flange.

NOT CLEAR ON THIS STEP

8. **Rotate Ring Around Flange.** You then rotate the ring around the flange like you would remove a lid from a gallon of paint if you intended to use the lid again that is. Yes I am **talking about warping the base ring to slide it off the prop flange**.

NOT CLEAR ON THIS STEP