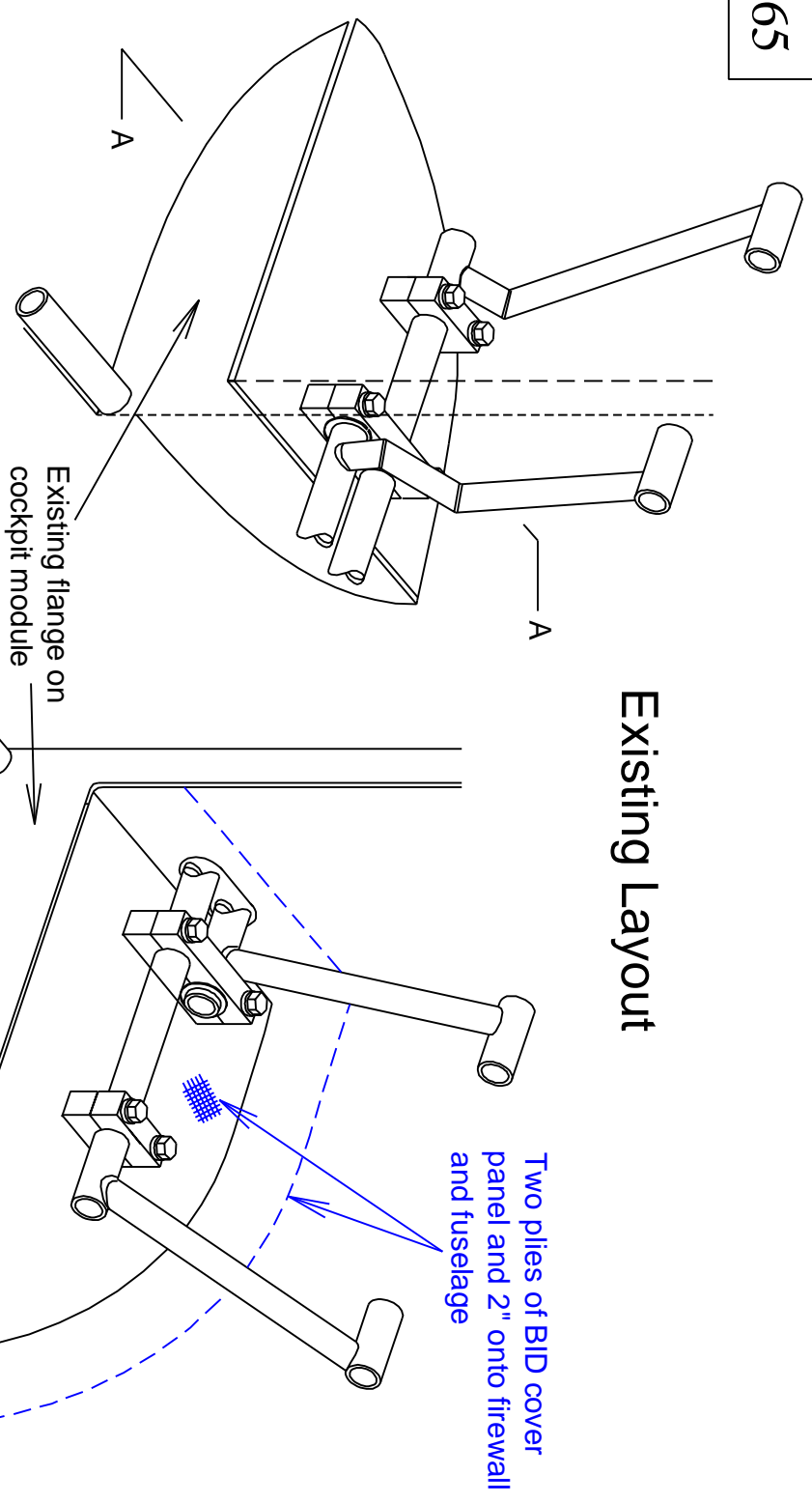
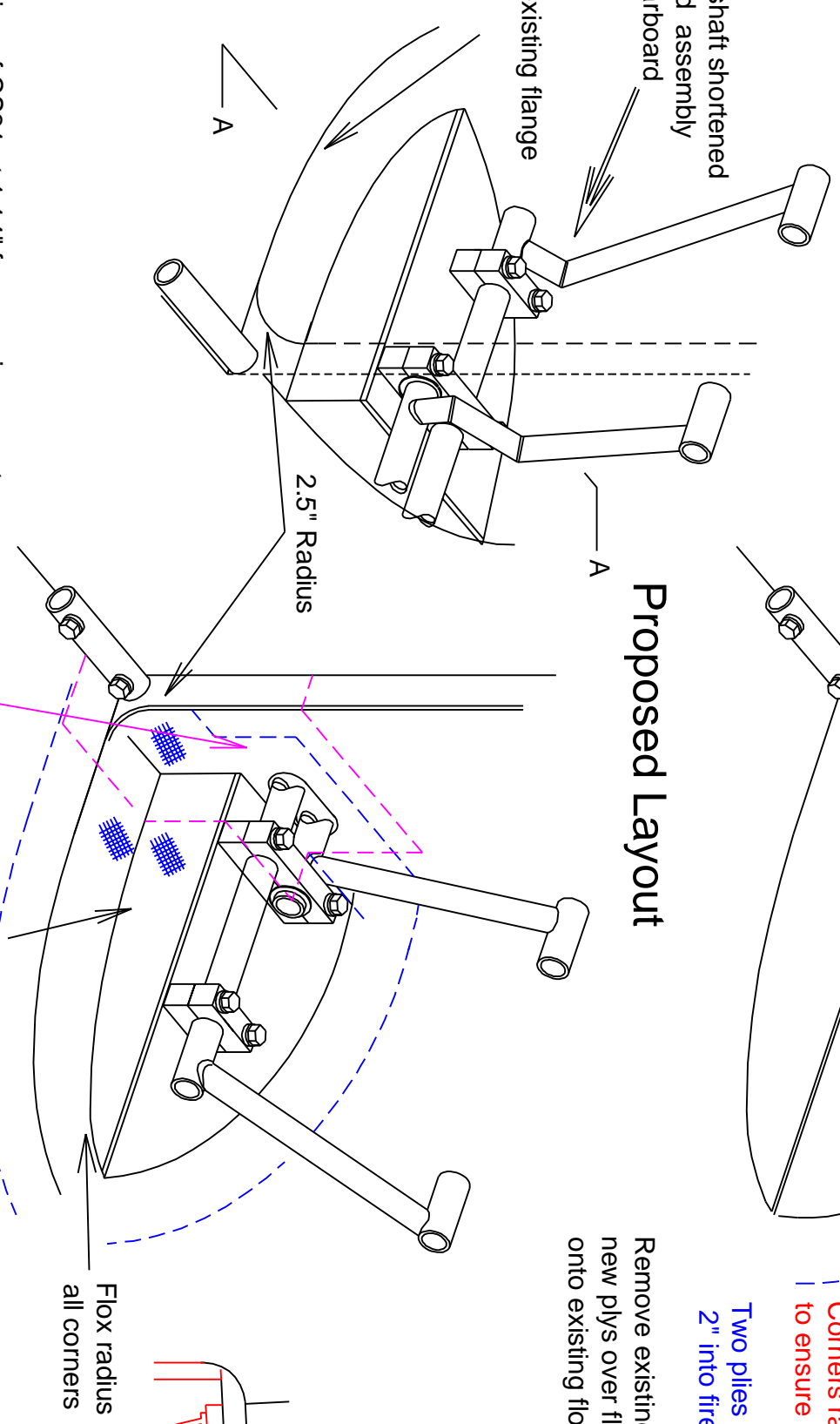


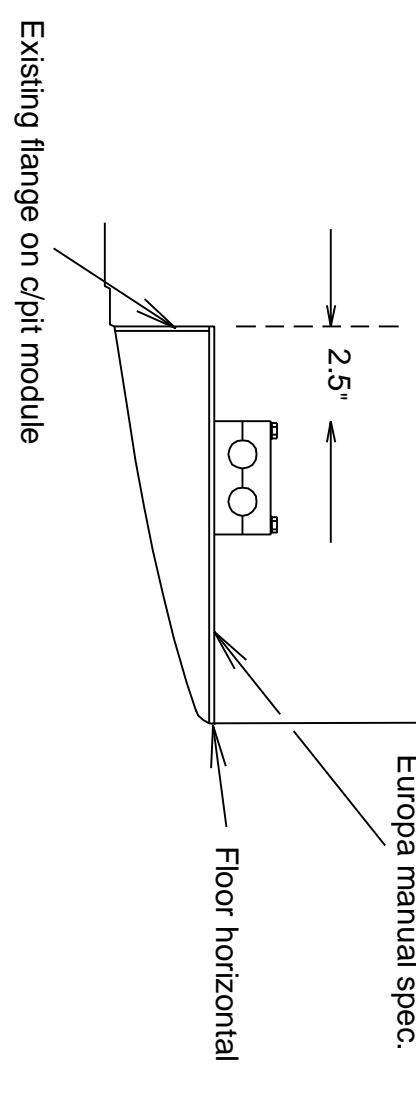
Existing Layout



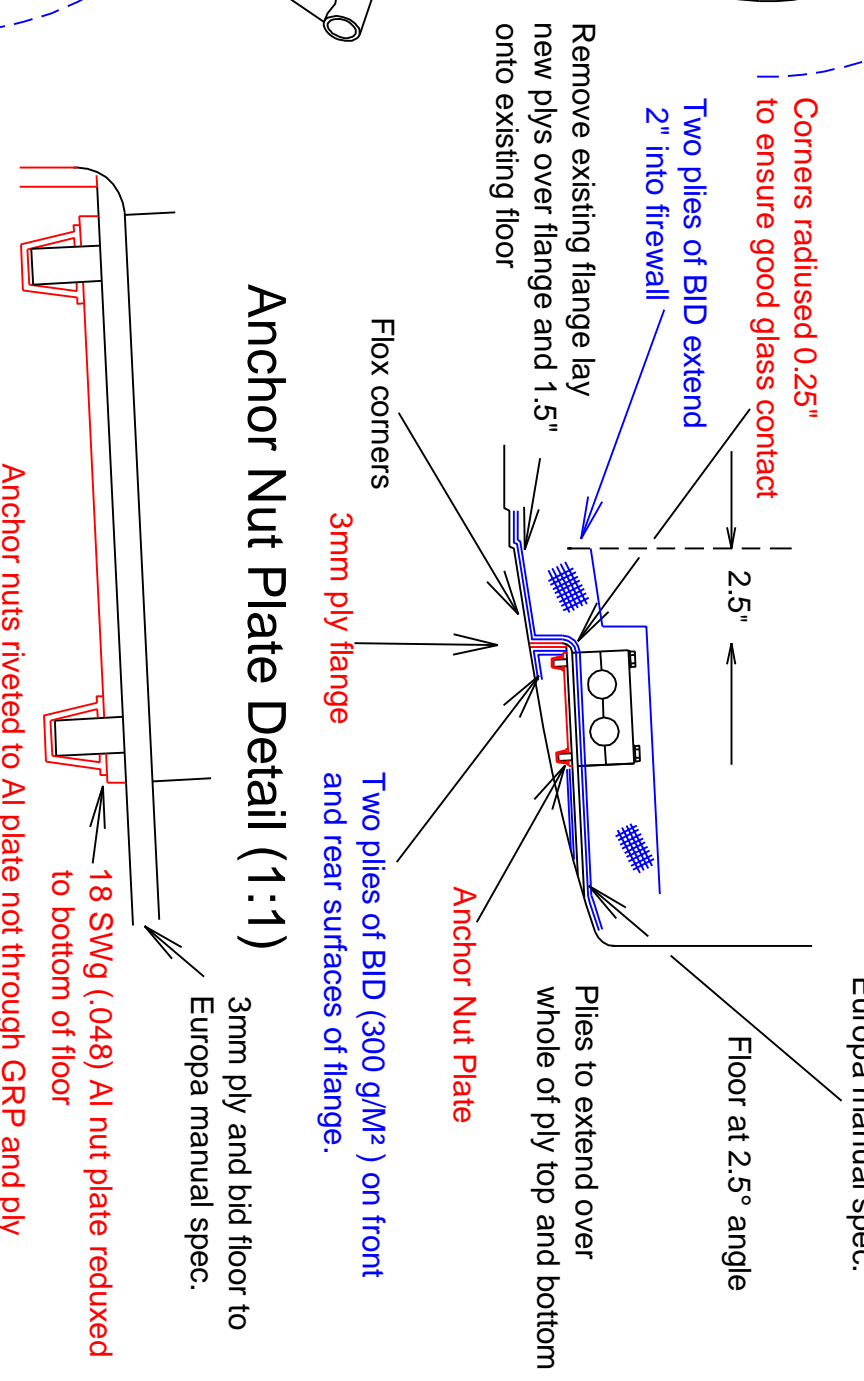
Proposed Layout



Existing Section A - A



Proposed Section A - A



PFA MODIFICATION APPLICATION

REV	Drawn By	Date	Description

Drawn By I. F. Rickard	Title Europa XS Trigear Pedal Floor Reduction
Date 10/07/2002	Serial No 505
Checked by	Drawing No Europa XS
Date	Scale 1:5
	A/C Repr G-IANI
	Rev 6
	Drawing Sheet 1 of 1

Position of CS21 at 1.14" from engine mount lower attachment tubes is maintained. Rudder cable is 1" lower at attachment to CS21 and has clear path.