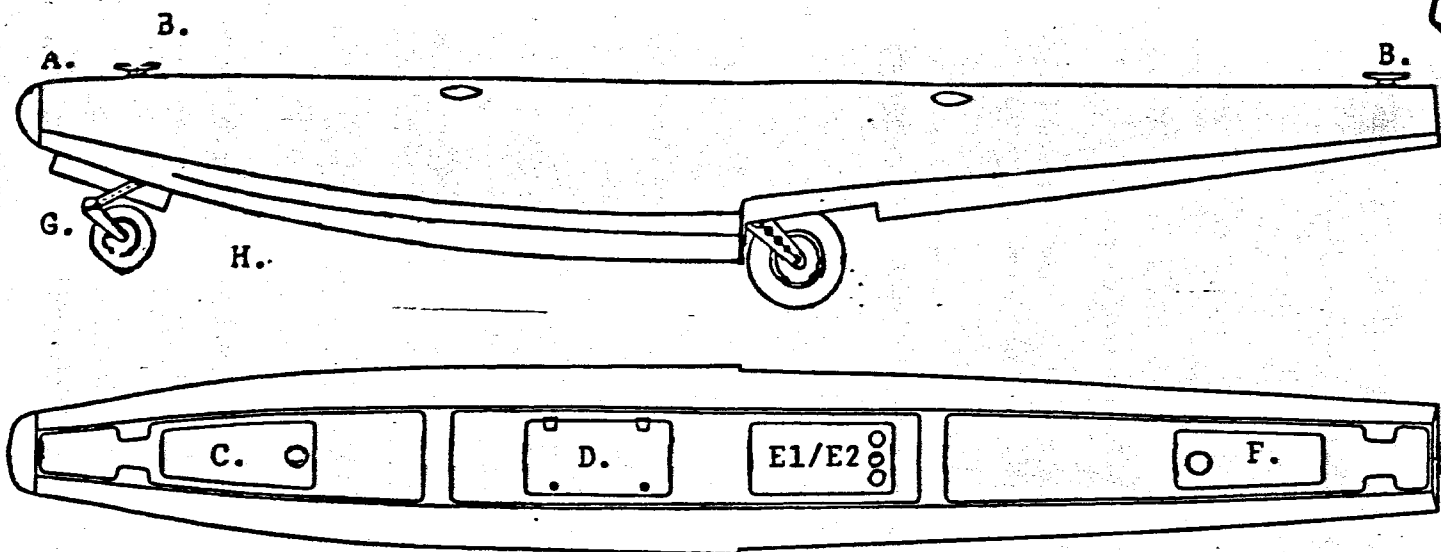


**1100 SERIES FLOATS**  
**GROUP ASSEMBLY PART NUMBERS**

**#1101 STRAIGHT FLOATS**

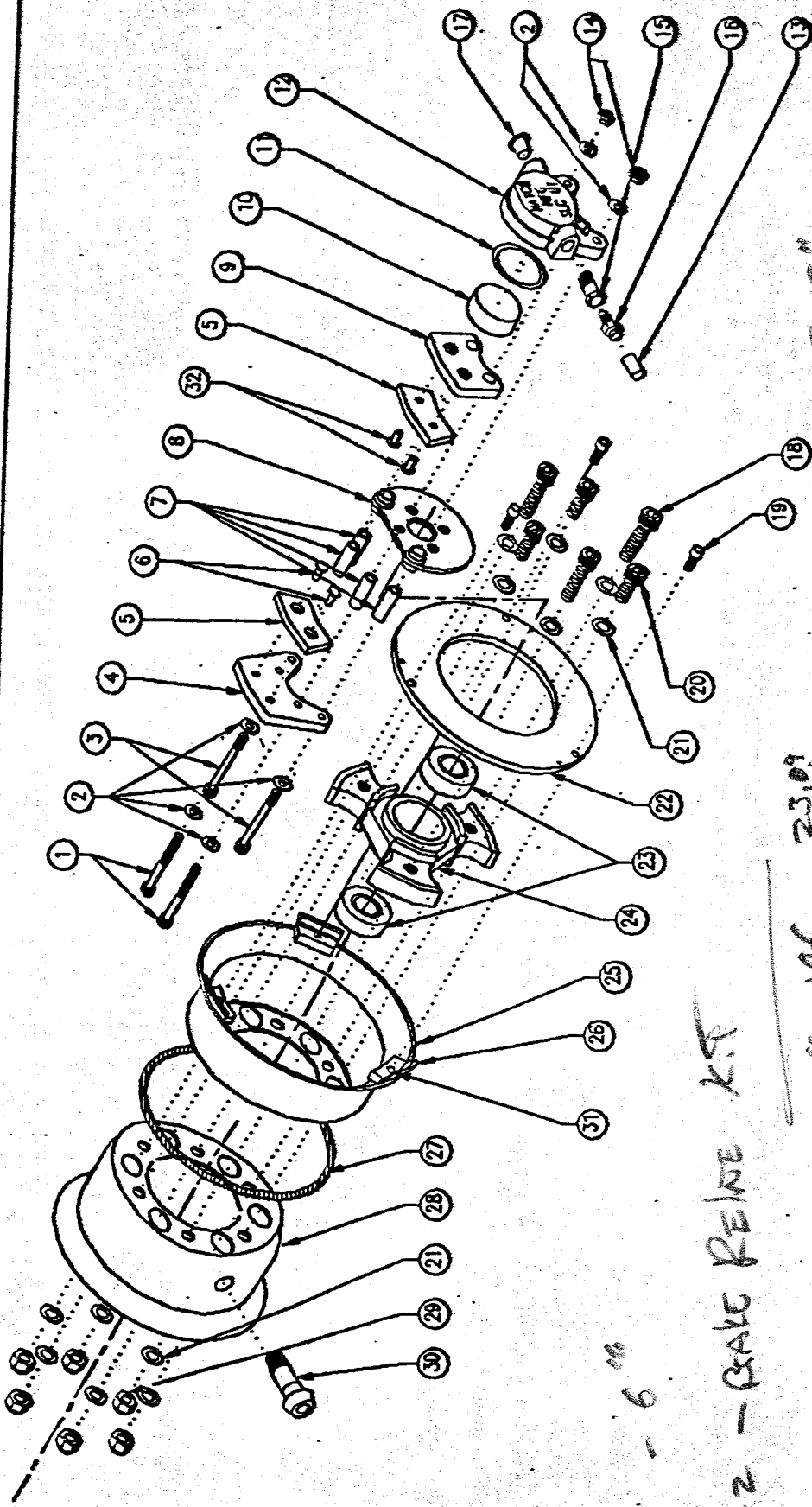
**#1102 AMPHIBIOUS FLOATS**

- 1) Exterior
- 2) Main Gear
- 3) Main Wheel and Brake
- 4) Nose Gear and Wheel
- 5) Nose-Main Cable Interconnect
- 6) Nose Door Linkage
- 7) Water Rudder
- 8) " " , interior Float
- 9) Rigging Procedure (Amp. Float-nose to main gear)
- 10) Checking Overcenter Travel + Stop



A.	1-Bumper	620-1201-001	
B.	2-Cleats 4-Screws 4-Washer, large 4-Washer 4-Nut	450-1002-001 MS24694C70  MS21044C08	
C.	1-Cover, front	310-0001-004	
D.	1-Hatch, Locker 2-Hinge 10-Screw 10-Washer 10-Nut 2-Lock 2-Spacer, lock 2-Washer, lock 2-Pins 4' Seal, Hatch (Gray, 1/4" wide) 2-Ramps 2-Screw 2-Washer 2-Nuts	310-0001-003 450-1003-001 MS24694C6 AN960C8 MS21044C3 480-1010-001 480-1010-002 AN960C816L 450-0012-002 270-0019-001  450-1004-001 MS24694C9 AN960C8 MS21044C3	
E1.	1-Cover, center (AM)	310-0001-005	
E2.	Cover, 2 hole (ST)	310-0001-008	
F.	1-Cover, rear Misc. Tubing, 3/8" 10-Clamp (8-ST)	310-0001-006 450-1013-001 450-0006-625	
G.	1-Door, Nosegear 1-Hinge 8-Screws 8-Washers 8-Nut 8-Rivits	310-0001-007 MS20257P4-7200 MS24694C4 AN960C8 MS21044C3	
H.	1-Strip, stainless 1-Strip, stainless 2-Screw 2-Washer 2-Nut	450-1001-001 1/2x72" 450-1001-002 1/2x18" (Straight) MS24694C6 AN960C8 MS21044C3	
I.	2-Spreader Bar	100-1901-001	
	5-Plug, Pumpout (4-ST) 32' Seal, Cover (White) 102 Screws 102 Nutplate 204 Rivits	450-1005-001 270-0020-001  MS24694C50 K1001-3 MS20426AD3-4	





DISC - 05-6"

23.09  
M66-106

BRK-2 - BRAKE REINE KIT

SHCS DRILLED	10-24X1.75SHCS(A)	2	14	LOCK NUT	10-24NYLOC	4	25	WHEEL, BRAKE HALF	62-5-2B(A)	1
WASHER	AN960-10L	6	15	BRAKE BLEEDER SEAT	BBS(A)	1	26	MOUNTING LUG, MH5B	ML5	3
SHCS	10-24X1.75SHCS	2	16	BRAKE BLEEDER VALVE	F6446-007	1	27	TUBELESS KIT-O-RING BUNA N	62-121(KIT)	1
STATIONARY BRK SHOE, 4/UL	SBS4	1	17	CAPLUG	2X	1	28	WHEEL, VALVE HALF	62-5-2H(A)	1
LINING, 4/ULTRALIGHT	M66-103A	2	18	SHCS	.31-18X1.25SHCS	3	29	LOCK NUT	.31-18NYLOC	6
BRASS RIVET	4-6	2	19	SHCS, DRILLED	10-24X.50SHCS(A)	3	30	TUBELESS KIT-VALVE STEM	62-121(KIT)	1
SPACER, 4/ULTRALIGHT BRAKE BSP4	BSP4	4	20	SHCS	.31-18X.75SHCS	3	31	HELI COIL	10-24X.380HELICOIL	3
BRAKE PLATE, .62 AXLE	BPA.62MH	1	21	WASHER	AN960-516L	12	32	BRASS RIVET	4-4	2
MOVABLE BRK SHOE, 4/UL BRK	MBS4	1	22	BRAKE DISC, 4" BRAKE	D4(A)	1				
PISTON, 4" BRAKE	PI-2	1	23	BEARING, .62	62-1(KIT)	2				
O-RING BUNA N	2-21B	1	24	HUB FRONT W/62 BEARING	62-1(KIT)	1				
PLUCK HOUSING, 4" BRAKE	PH-2	1								
DUST PLUG	.234-.50IL	1								
PART NAME	INVENTORY NO.	REQ'D	NO.	PART NAME	INVENTORY NO.	REQ'D	NO.	PART NAME	INVENTORY NO.	REQ'D
TD-MH5B	WATCO mfg 65 East Kensington Ave SALT LAKE CITY, UT 84115 (801) 486-7574			MH5B				GARY P. LANGFORD	NONE	
								DATE: JULY 1, 1992		REVISION: 1
								AUTHORIZED BY:		

Parts List

PART DESCRIPTION

PART NUMBER	PART DESCRIPTION
A1	LINK, TRUNION-NOSE, LEFT
A2	LINK, TRUNION-NOSE, RIGHT
B	MOUNT, PULLEY-NOSE
C	FITTING, SHOCK, UPPER-NOSE
D	SHOCK-NOSE
E	FITTING, SHOCK, LOWER-NOSE
F	L&O, TRUNION-NOSE
G	FORK, NOSE
H	GUIDE, FORK-NOSE
I	GUIDE, FORK, HINGE SIDE-NOSE
J	WASHER, FORK, FRICTION-NOSE
K	WASHER, FORK, FRICTION-NOSE
L	SPACER, WHEEL-NOSE
M	WHEEL-NOSE
N	BEARINGS, WHEEL-NOSE
O	BOLT
P	PIN, LINK
Q	TUBE
R	WASHER, BELLEVILLE
480-5007-101	LINK, TRUNION-NOSE, LEFT
480-6007-101	MOUNT, PULLEY-NOSE
480-6040-101	FITTING, SHOCK, UPPER-NOSE
480-6010-001	SHOCK-NOSE
270-0022-001	FITTING, SHOCK, LOWER-NOSE
480-6010-101	L&O, TRUNION-NOSE
480-5023-101	FORK, NOSE
480-5030-101	GUIDE, FORK-NOSE
480-5037-001	GUIDE, FORK, HINGE SIDE-NOSE
480-5036-001	WASHER, FORK, FRICTION-NOSE
480-6038-001	WASHER, FORK, FRICTION-NOSE
480-6032-001	SPACER, WHEEL-NOSE
480-1700-001	WHEEL-NOSE
300-6610-101	BEARINGS, WHEEL-NOSE
170-0608-001	BOLT
480-6038-101	PIN, LINK
480-5043-001	TUBE
800-1124-001	WASHER, BELLEVILLE
800-1621-001	
850-0001-001	

Note: Cupped side of washers (part S) face each other.

(OPTIONAL)

T	BOLT, ALLEN, STAINLESS	730-7491-001
U	NUT, LOCK, STAINLESS	640-0985-001

V	BUSHING, LINK	450-1006-001
W	BUSHING, TRUNION	450-1008-001
X	BUSHING, YOKE	450-1009-001

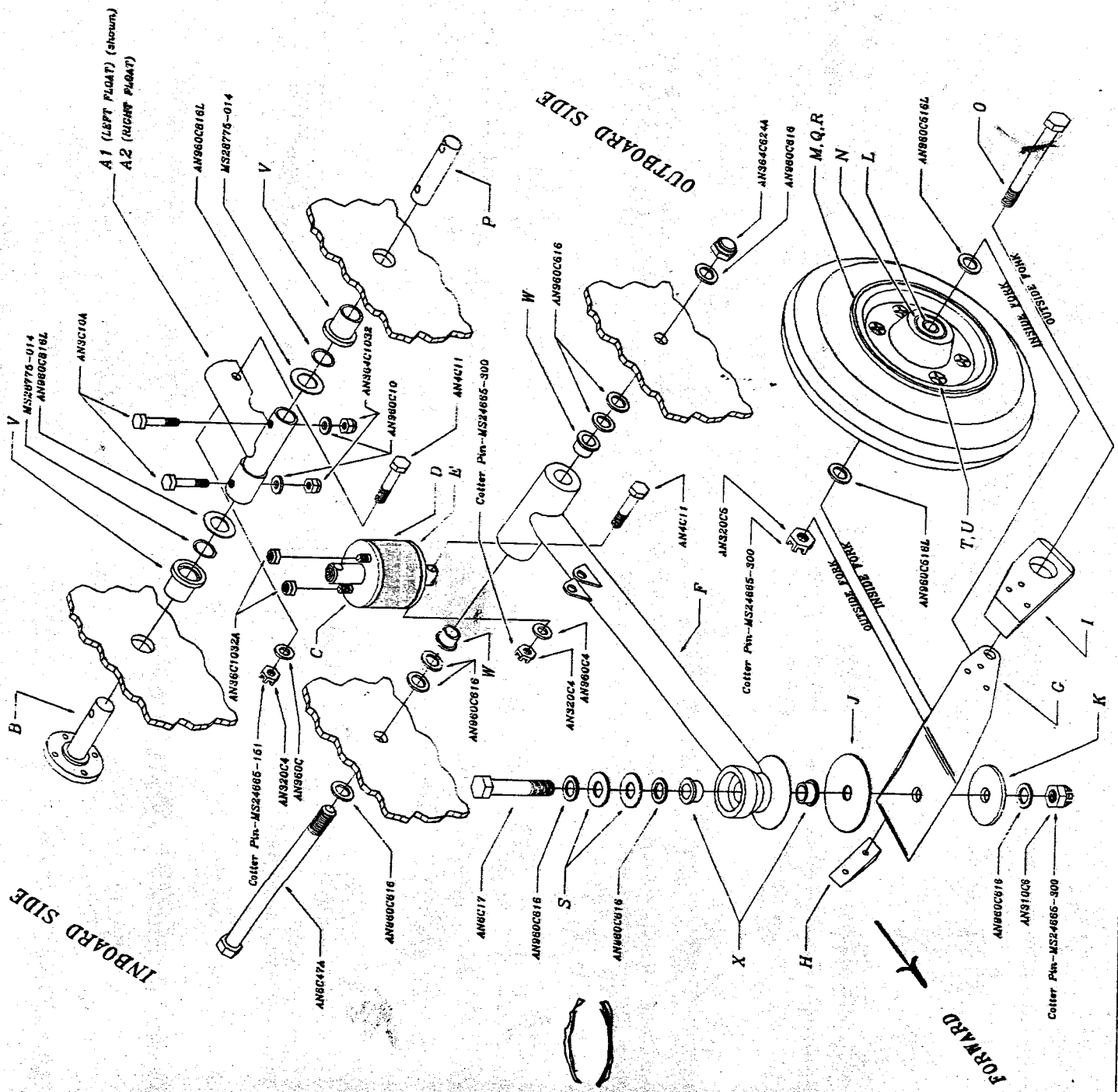
LEFT FLOAT SHOWN, FOR RIGHT FLOAT.

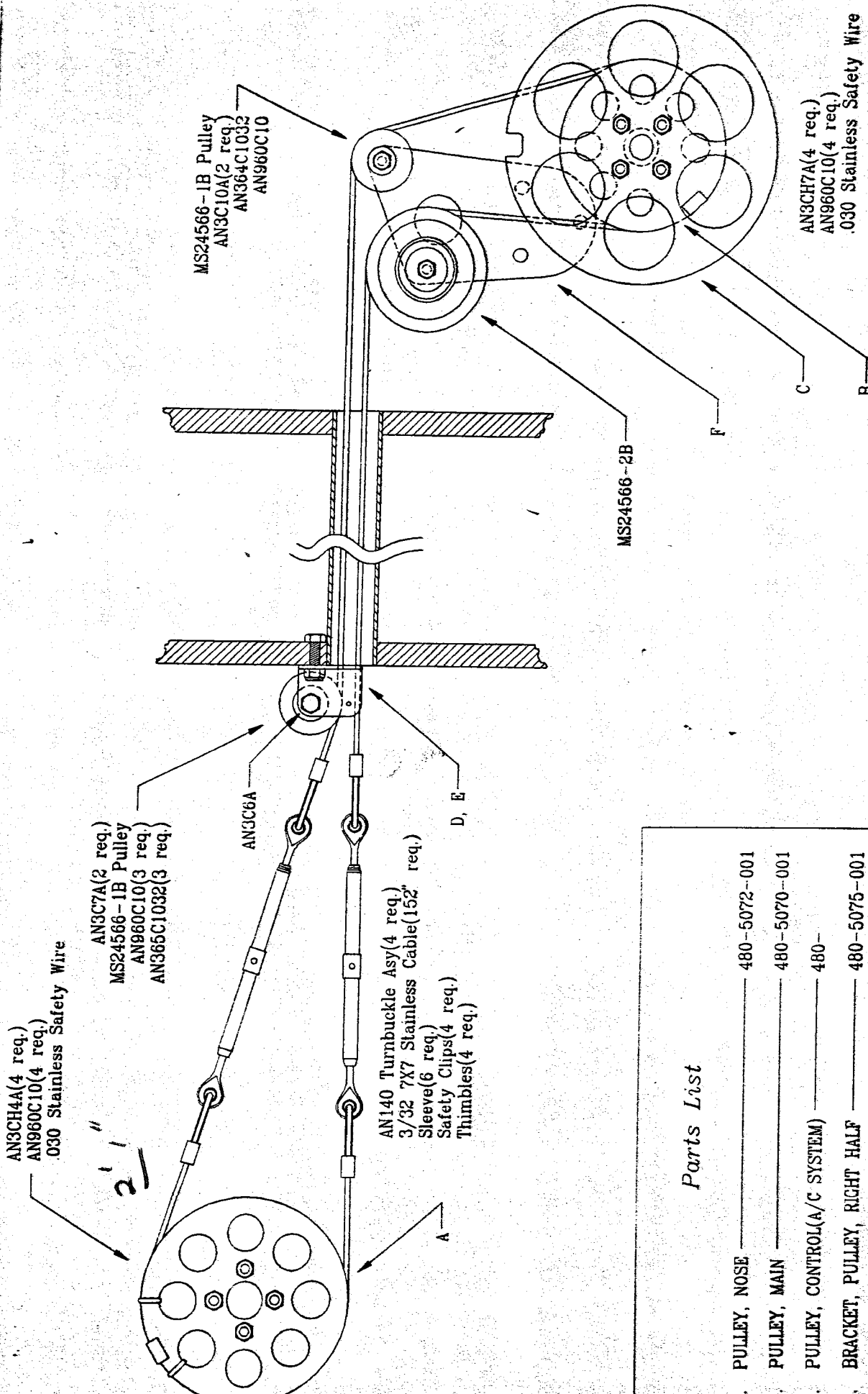
1. SWAP THE POSITION OF PARTS B & P
2. USE PART A2 IN PLACE OF A1

Note: Cotter pins required for Castle nuts (not shown).

4

QUICK REFERENCE DATA	ASSEMBLY SCHEMATIC
	NOSE-GEAR
	AMPHIB FLOAT (LEFT)
Standard Hamilton	Part No. LC-001A
Floats Division	Rev. No. N/A
	Date: 11-12-1953





*Parts List*

- PULLEY, NOSE \_\_\_\_\_ 480-5072-001
- PULLEY, MAIN \_\_\_\_\_ 480-5070-001
- PULLEY, CONTROL(A/C SYSTEM) \_\_\_\_\_ 480-
- BRACKET, PULLEY, RIGHT HALF \_\_\_\_\_ 480-5075-001
- BRACKET, PULLEY, LEFT HALF \_\_\_\_\_ 480-5075-002
- PULLEY BRACKET, MAIN GEAR \_\_\_\_\_ 480-5025-001

QUICK REFERENCE DATA	ASSEMBLY SCHEMATIC	
	GEAR CABLE ASSY	
	AMPHIB FLOAT	
Standard Hamilton	Part No.	Rev.
Floata Division	A	N/A
	Part No.	Rev.
	5	CBL-01A
	Issued 11-10-1952	

2-AN743-12 Mount, right angle  
 2-AN3C7A Bolt  
 2-AN960C10 Washer  
 2-AN364C1032A Nut

1-AN3C6 Bolt  
 2-AN960C10 Washer  
 1-AN320C3 Nut  
 1-MS24665-151

A. 1-480-5095-001 Link, Nose Door Tab  
 B. 1-450-1007-001 Spring  
 C. 1-480-5090-002 Rod, adjustable female  
 D. 1-480-5090-001 Rod, adjustable male  
 E. 1-480-5097-001 Tab, Door Mount

1-AN3C7 Bolt  
 1-AN960C10 Washer  
 1-AN364C3 Nut  
 1-MS24665-151 Cotter

2-AN3C4A Bolt  
 2-AN960C10 Washer  
 2-AN364C1032A Nut

1-AN3C7 Bolt  
 1-AN960C10L Washer  
 1-AN960C10 Washer  
 1-AN364C3 Nut  
 1-MS24665-151 Cotter

CAUTION: Install bolt towards front.  
 (Bolt may jam if installed towards rear.)

1-AN3C7 Bolt (Install hole vertically.)  
 1-AN960C10 washer  
 1-AN364C1032A Nut

Note: Use additional 960C10 or 960C10L washer as required to minimize side play between the two mounts, right angle (AN743-12) and link (A).

**PROPRIETARY**

INFORMATION CONTAINED HEREIN IS PROPRIETARY AND PROPERTY OF STODDARD-HAMILTON AIRCRAFT INC. AND IS NOT TO BE COPIED, DUPLICATED, OR USED AS THE BASIS OF MANUFACTURE OR SALE OF EQUIPMENT WITHOUT PERMISSION. WHERE FURNISHED TO A SUBCONTRACTOR, IT SHALL BE USED SOLELY IN THE PERFORMANCE OF WORK CONTRACTED BY STODDARD-HAMILTON. THIS DOCUMENT IS PROPRIETARY, AND SHALL NOT BE DISCLOSED TO OTHERS WITHOUT THE APPROVAL OF STODDARD-HAMILTON AIRCRAFT INC.

**TOLERANCES: EXCEPT WHERE NOTED**

TOLERANCING AND DIMENSIONING PER ANSI Y14.5M  
 LINEAR  
 .X = ± .10  
 .XX = ± .030  
 .XXX = ± .005  
 ANGULAR: ± 1 DEGREE  
 FRACTIONAL: ± 1/32  
 FINISH REQUIREMENTS: 125 RMS

REMOVE ALL BURRS AND EDGES .010-.015  
 CONCENTRICITY: .010 FIM  
 RUNOUT: .010 FIM  
 PERPENDICULARITY: .010 IN/IN  
 PARALLELISM: .010 IN/IN  
 INTERNAL CORNER RADIUS: .015-.030  
 DIMENSIONS IN INCHES  
 DIMENSIONS APPLY AFTER PLATING

DESCRIPTION:

**NOSE DOOR LINKAGE**



**STODDARD-HAMILTON**  
 AIRCRAFT INCORPORATED

18701 58TH AVENUE NE ARLINGTON WA 98223 206/435-8533

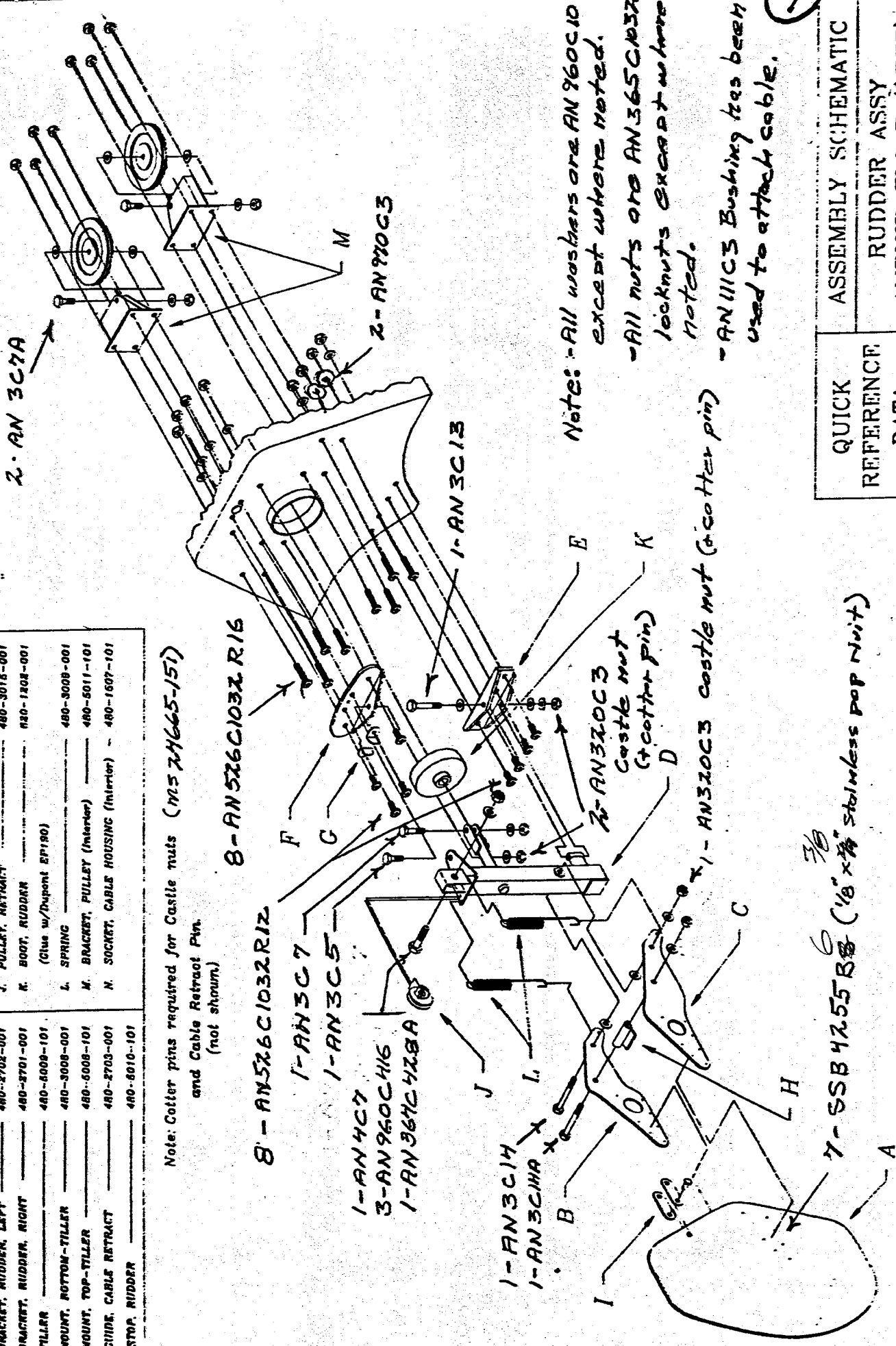
FILE NO.	DRAWN BY: KRS	DATE: 3-2-94	SCALE: NTS	PART NO.:	REVISIONS
LOCATION	QTY/AIRCRAFT	ENGR.	DATE:	SIZE	USED ON:
					SHT. 1 of 1

N/A

Parts List

PART DESCRIPTION	PART NUMBER	PART DESCRIPTION	PART NUMBER
1. RUDDER	480-2902-001	I. LINK, CABLE RETRACT	480-2704-001
2. BRACKET, RUDDER, LEFT	480-2702-001	J. PULLEY, RETRACT	480-3015-001
3. BRACKET, RUDDER, RIGHT	480-2701-001	K. BOOT, RUDDER	480-1202-001
4. TILLER	480-5008-101	(Glue w/Dupont EP190)	
5. MOUNT, BOTTOM-TILLER	480-3008-001	L. SPRING	480-3008-001
6. MOUNT, TOP-TILLER	480-5008-101	M. BRACKET, PULLEY (Interior)	480-5011-101
7. GUIDE, CABLE RETRACT	480-2703-001	N. SOCKET, CABLE HOUSING (Interior)	480-1507-101
8. STOP, RUDDER	480-5010-101		

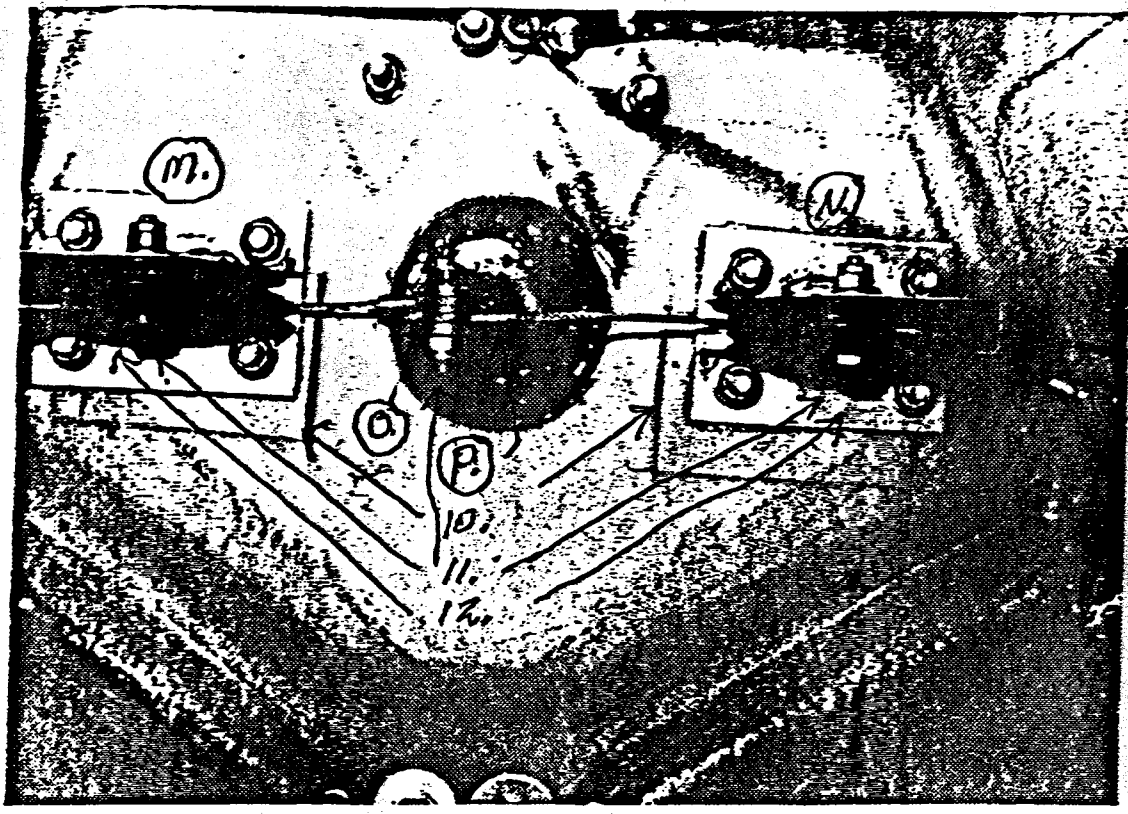
Note: Cotter pins required for Castle nuts (MS 24665-151) and Cable Retract Pin (not shown)



Notes: - All washers are AN 960C10 except where noted.  
 - All nuts are AN 365C413A locknuts EXCEPT where noted.  
 - AN 111C3 Bushing has been used to attach cable.

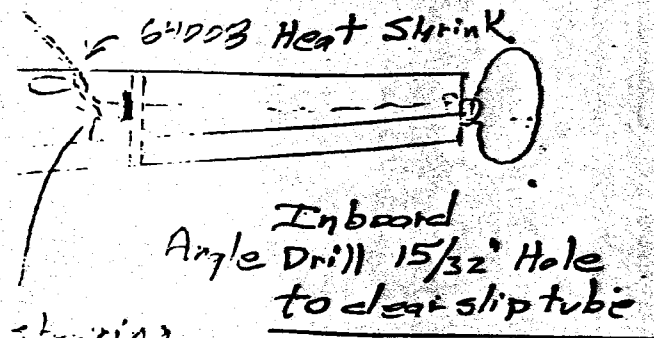
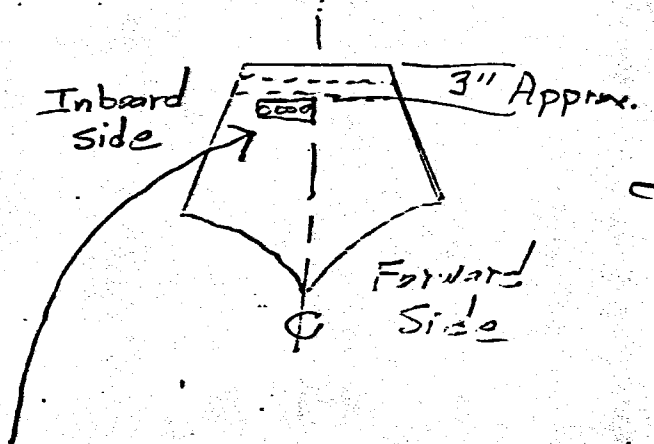
7-SSB 4255 B (1/8" x 3/8" stainless pop nut)

QUICK REFERENCE DATA	ASSEMBLY SCHEMATIC	
Stoddard Hamilton	RUDDER ASSY	
Floats Division	AMPHIB FLOAT (LEFT)	
REV	FIG. NO.	REV. NO.
A	N/A	RUD-01A
DATE 12-31-1993		WORK BY DAW
		HEET 1/1

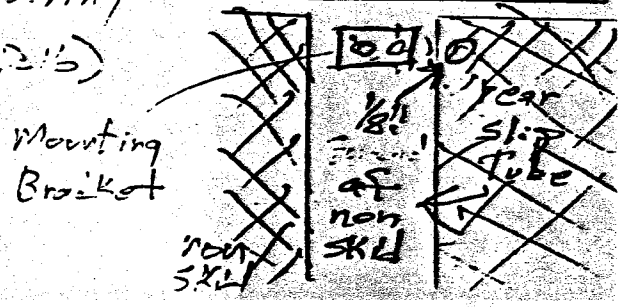


- M. 1 65011 Bracket, Rudder Right
- N. 1 65011 " " Left
- O. 2 72008 Bushing, cable rudder
- P. 2 72211 Sleeve, nicopress

- 10. 3 AN528C 1032 R16 Screw
- 3 AN760C10 Washer
- 3 MS21041C1032 Nut, lock
- 11. 3 AN3C7 Bolt
- 6 AN760C10 Washer
- 3 AN320C3 Nut, cast
- 3 MS24665-15 Pin, cotter
- 12. 2 MS24566-2B Pulley



- 13. 1 65007 Socket, cable housing, steering
- 2 71213 Screws (AN528C 1032 R16)
- 2 AN760C10 Washer
- 2 MS21041C1032 Nut, lock



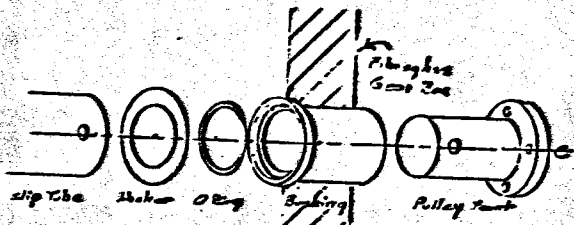


STODDARD-HAMILTON AIRCRAFT, INC.  
RIGGING PROCEDURE  
MODEL 1100 AM

12/29/92

CAUTION: Door or linkage can be damaged if retract attempted without sufficient clearances.

- 1) Assure nose axle bolt installed with head to hinge side.
  - 2) Assure link arm, free with minimum side play. (Chamfer link arm where it contacts torsion bar.)
  - 3) Assure link to adjustable rod bolt installed facing forward.
  - 4) Snug two link bolts, assure free movement and cotter key.  
NOTE: Leave door disconnected.
  - 5) Rotate pulley so main gear down lock closes and adjust outer cable to 20 lbs. tension (so nose gear down lock cannot be pushed off by hand).
  - 6) Holding adjusting rod clear, rotate pulley so main gear fully retracts with its uplock tight.
  - 7) Adjust inner cable to 50/60 lbs. tension so nose tire is clear of door. Close door (by hand) to check clearance.  
NOTE: If inner cable tension too high, loosen outer cable. Re-check down locks and uplock/tire position.
- Adjust tab on door to 1-1/2" from hinge, 2-1/2" from door center and rod length to 5-1/4".
- 8) Attach rod to door bracket and slowly retract gear.  
CAUTION: At no time during retraction should tire touch door. If it does, stop and lengthen rod, move tab or use alternate curved rod.
  - 9) With gear fully retracted, door should close.
  - 10) With gear fully extended, confirm tire swiveled has a 1/4" or better door clearance.
  - 11) Snug jam nut on adjusting rod. Snug castle nut and install cotter pin. Confirm door moves freely.
  - 12) Double check all (3) cotter pins installed, gear/door closes properly and opens with sufficient clearance, both cable tensions acceptable and turnbuckle locking clips installed.



Assembly  
of O Ring  
Washer to  
Slip Tube +  
Pulley Mount

Note:  
Bushing is  
sealed to  
Fiberglass

