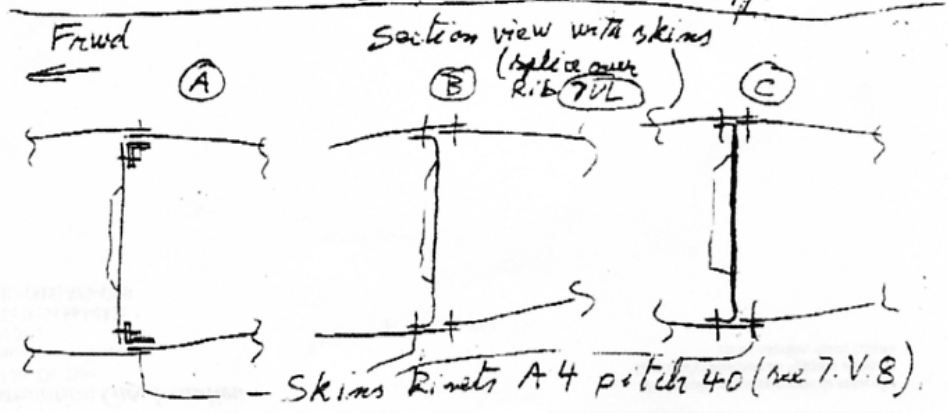
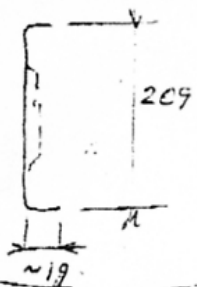


Add also  
R+L Nose  
and Rear Ribs

Spar extension 7-UL  
 $t = .040 = 1mm$   
 $d\ell = 144mm$   
 $l = 530mm$



7-UL 1/4

Extension 7-UL .040  $l = 530$

(not tip 7V.3.3 is joggled to fit inside overlap 40)

extra Nose Rib 7.V.1 (1) R+L  
Rear Rib 7V.1 (2) R+L  
Flap arm bracket 7.V.1 (6) 2  
Slot support 7V.1 (5) 2  
flap arm axis 7V.1 (7) 2

} extra

Rear chord 7.V.6 (2)  $t = .016$

$l = ?$  to fit 510 extra

(also extra Rib angle 7V.6 (3))

Wing skins std from root to Rib # 7UL

two two out board post

$l \approx 560$  top

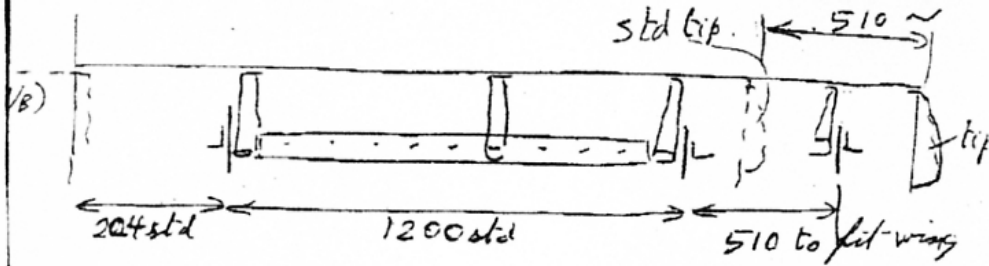
$= 430$  bottom

overlap over Rib # 7UL

C. B. T.E.  $l = 2130$  (not 1620)

7UL 2/4

1200s (see 1.5.2) UIB



Ribs 7.S.1.①

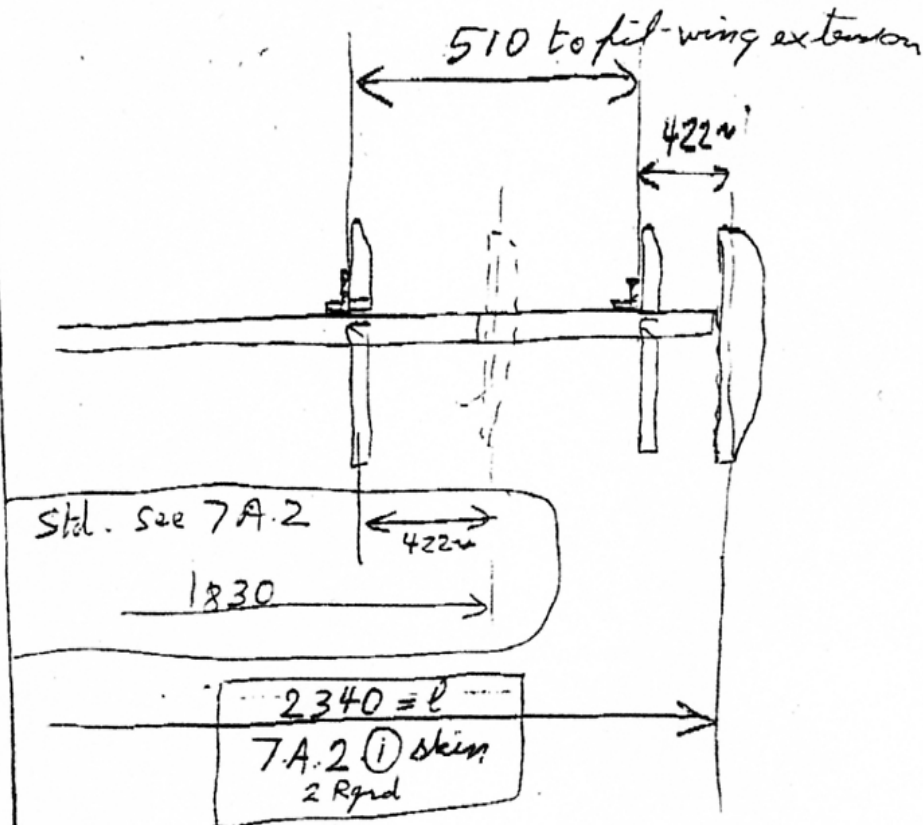
support 7.S.1.⑥

DB skin 7.S.1.③

T. Entrip 7.S.1.⑤

R + L	extra
2	
$l = 2340$	(instead 1830)
$l = 2340$	"

flaperson O/B (see 1A2)



Spar. 7.A.1 (4) (2)  $l = 1680$  1/B = std.

(2)  $l = 2300$  O/B

Noze Rib	7A.1(2)	R+R	extra
Rear Rib	7A.1(3)	R+L	
hinge brackets	7A.1(5)	R+R	

7.0L 4/4