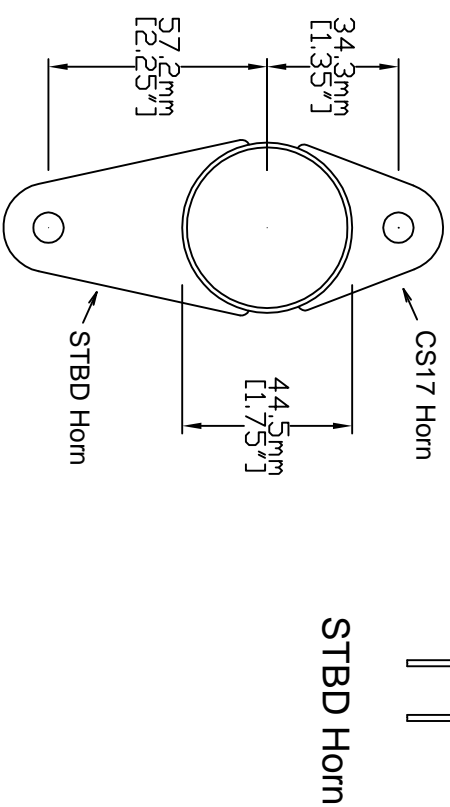
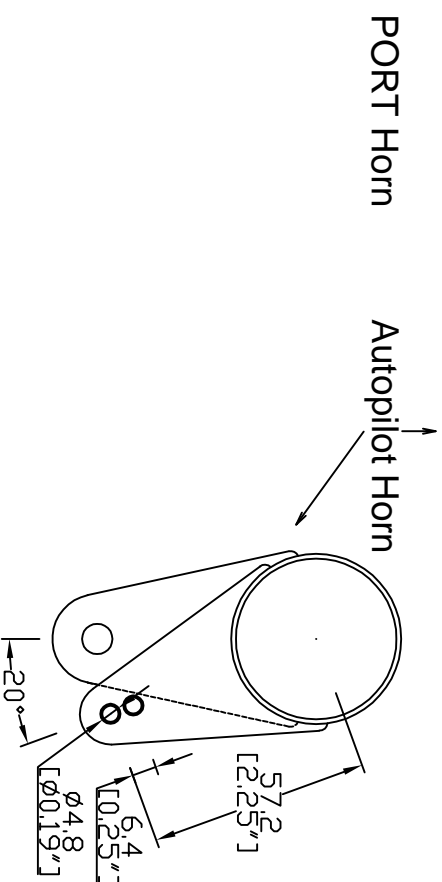
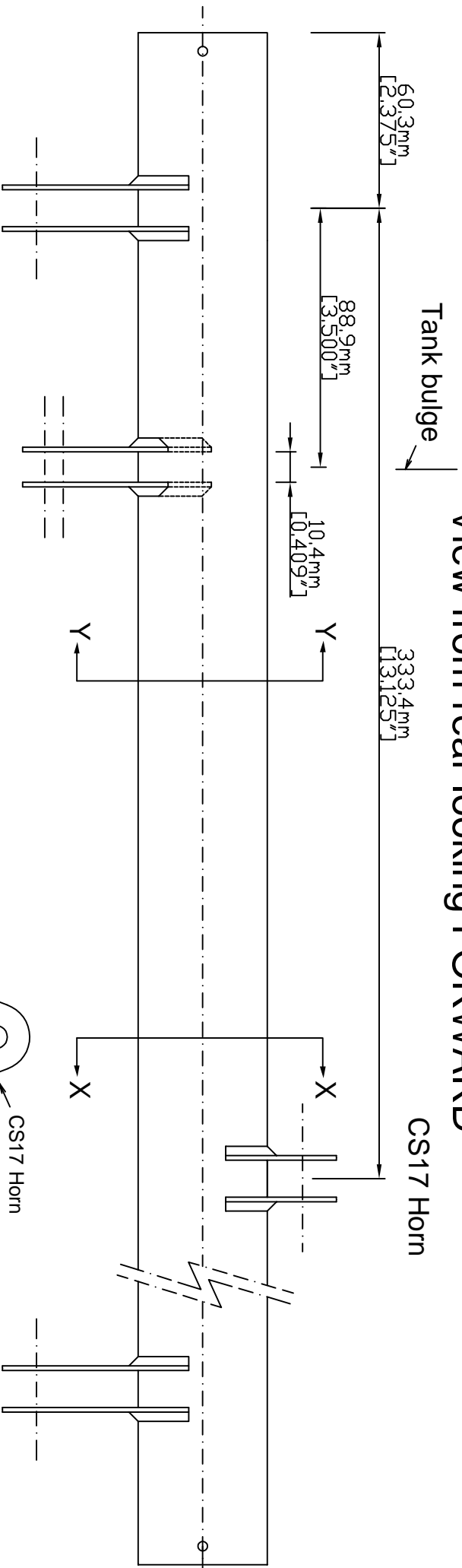


View from rear looking FORWARD



- Notes
- 1) Autopilot Horn same material (4130) and thickness as existing horns.
 - 2) Two 4.8mm (3/16) holes, 6.36mm apart

Drawn By I. F. Rickard	Title			
Date 25/10/2009	Europa XS MOD 76			
Checked by	Alt. Hold Autopilot Modified CS10			
	PFA A/C Type Europa XS	Serial No 247-13714	Drawing No Mod 76/3	Rev 1
Date	Scale 1:2	A/C Reqn G-IANI	Drawing Sheet	5 of 5