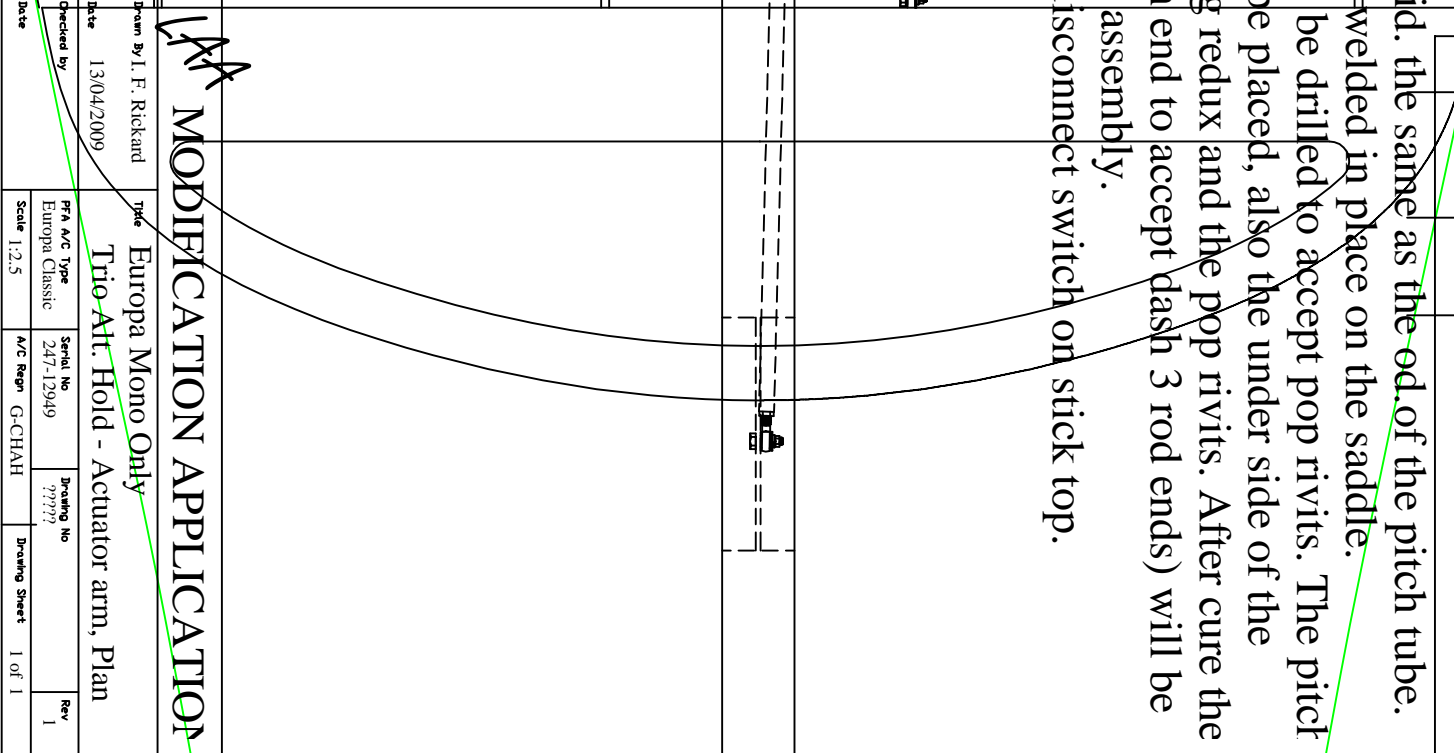
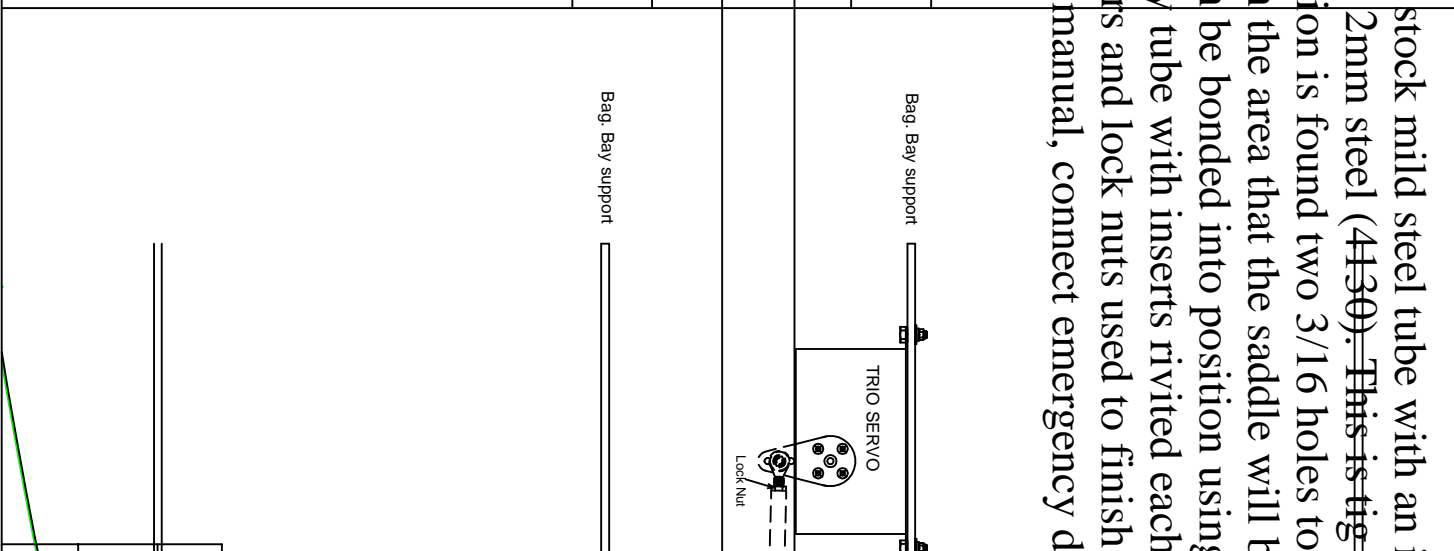
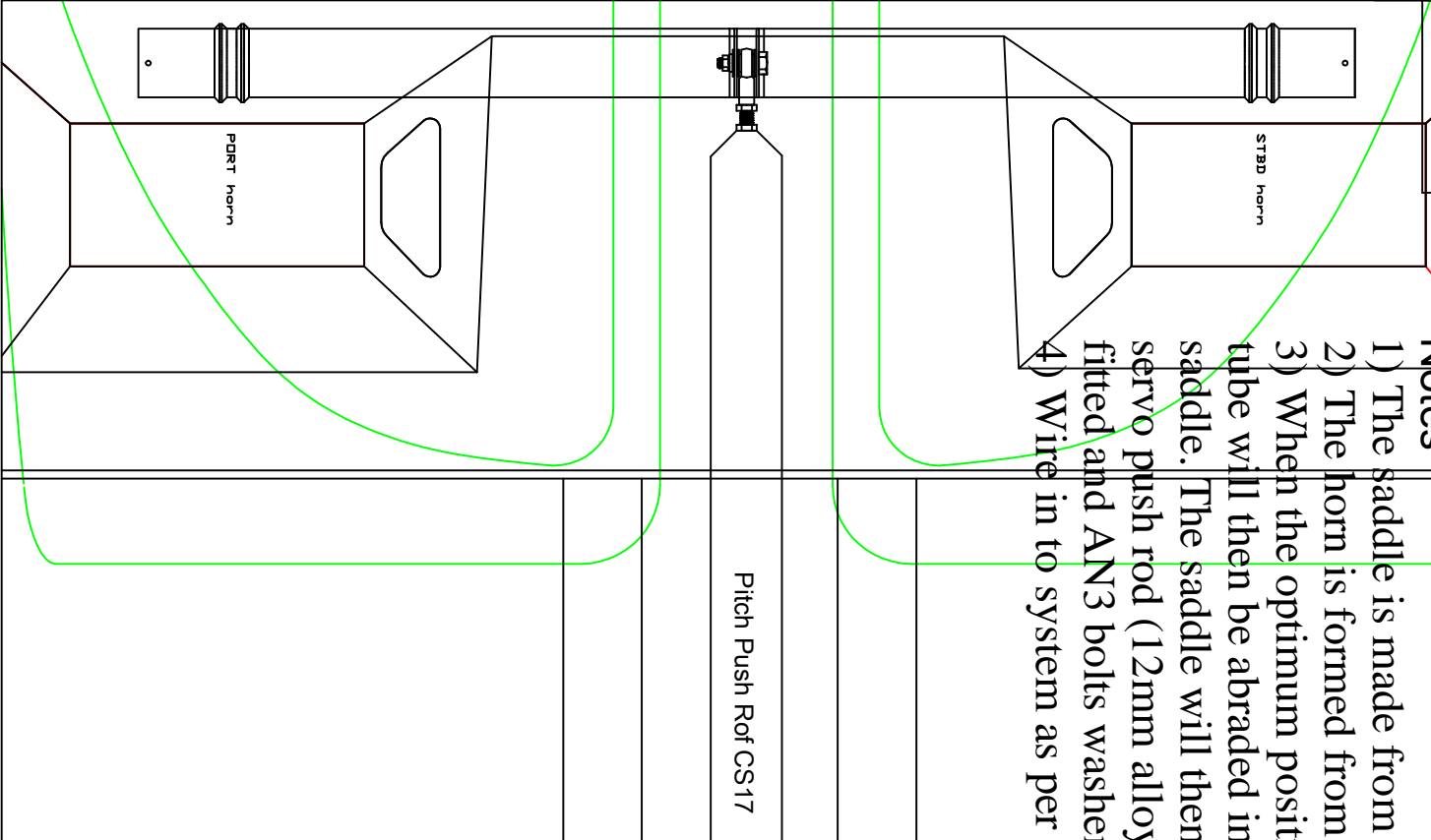


**Notes**

- 1) The saddle is made from stock mild steel tube with an id. the same as the od. of the pitch tube.
- 2) The horn is formed from 2mm steel (4130). This is tig welded in place on the saddle.
- 3) When the optimum position is found two 3/16 holes to be drilled to accept pop rivets. The pitch tube will then be abraded in the area that the saddle will be placed, also the under side of the saddle. The saddle will then be bonded into position using redux and the pop rivets. After cure the servo push rod (12mm alloy tube with inserts rivited each end to accept dash 3 rod ends) will be fitted and AN3 bolts washers and lock nuts used to finish assembly.
- 4) Wire in to system as per manual, connect emergency disconnect switch on stick top.



REV	Drawn By	Date	Description

**MODIFICATION APPLICATION**

Drawn By: I. F. Rickard	Title: Europa Mono Only
Date: 13/04/2009	Trio-Alt. Hold - Actuator arm, Plan
Checked by:	Scale: 1:2.5
Date:	A/C Reqn: G-CHAH
Serial No: 247-12949	Drawing No: 99999
Rev: 1	Drawing Sheet: 1 of 1