

KITFOX III - 1050

Changes from Model II.

WING SPAR:

**ADDITIONAL I - BEAM STIFFENER
NOT CLEAR!**

Tube : 2.5" x 0.058" (63.5 x 1.47 mm)
INSIDE DIAM. = 60.56 mm

I - BEAM: 2.4" DIA. = (60.96 mm)

LENGHT OF THE I - BEAM SECTION ?
DRAWING TO FOCA

HORIZONTAL TAIL / STABILIZER:

LEADING EDGE TUBE
WALL THICKNESS INCREASE FROM 0,039"
TO 0,049" IS REQUIRED.

FUSELAGE TRUSS STRUCTURE:

REINFORCEMENTS ACCORDING APPENDIX
ADDITIONAL TUBES 3/8" X 0,035"
INCREASING TUBE (SEE SECTION C - C)
TO 5/8" X 0.049"

WEISUNG: R. MEIER
BAZL, BERN 21.02.91

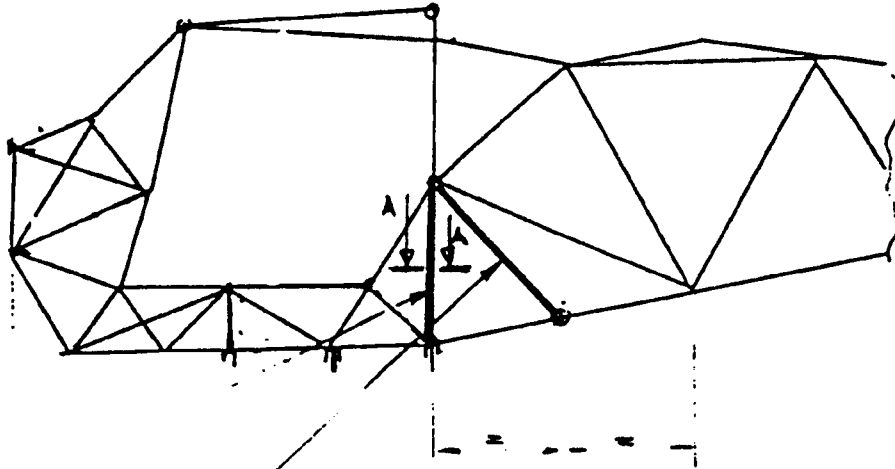
BEARBEITET: *HANS LEDER*

AVIO FLTER / A.F HAULER

⑤ FUSELAGE TRUSS STRUCTURE

REINFORCEMENTS : MAT 4130

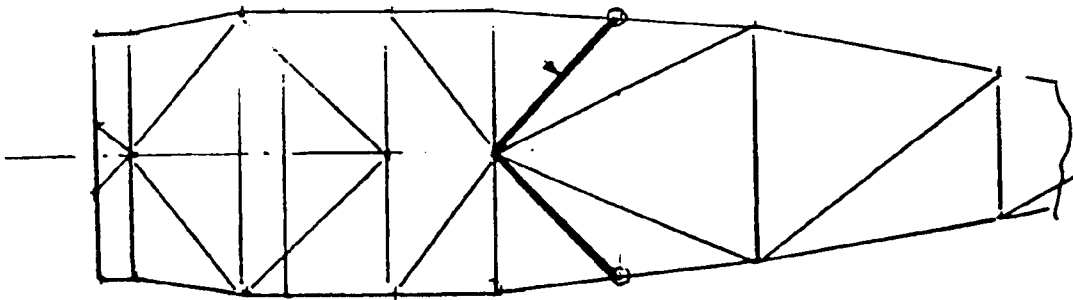
SIDE VIEW :



VERTICAL
TUBE

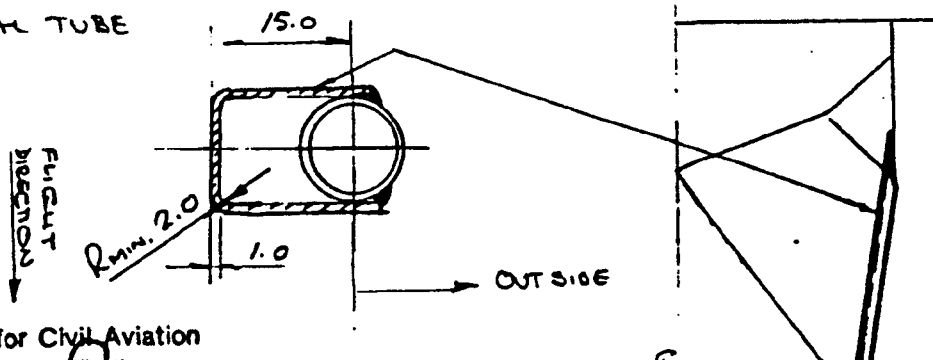
ADDITIONAL STRUTS $\neq 9.5 \times 0.9$

BOTTOM VIEW :



SECTION A-A REINFORCEMENT (LEFT/RIGHT SIDE)

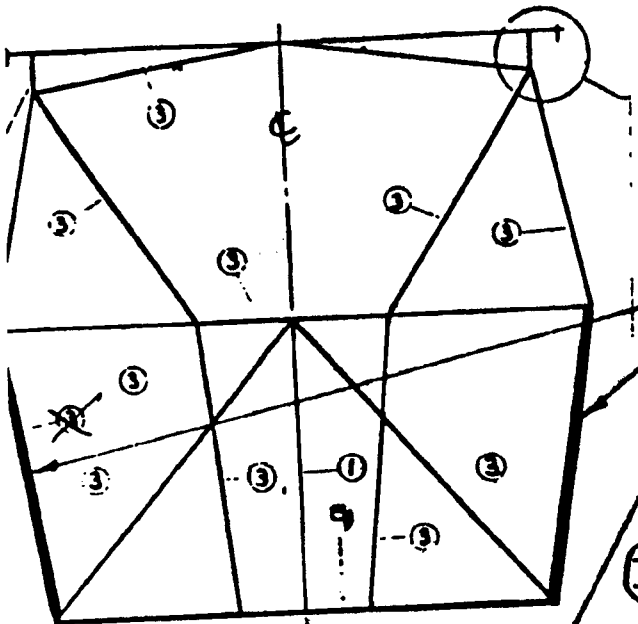
VERTICAL TUBE



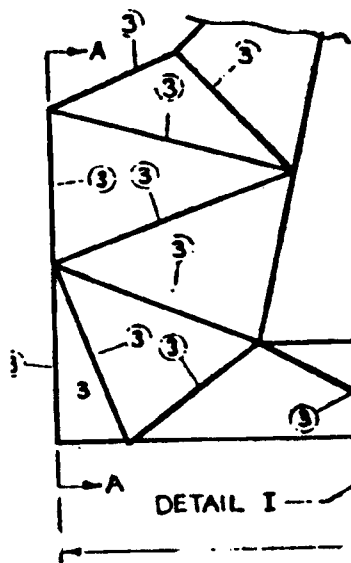
KIT FOX Model I, II, III

Fuselage Truss Structures
Reinforcements :

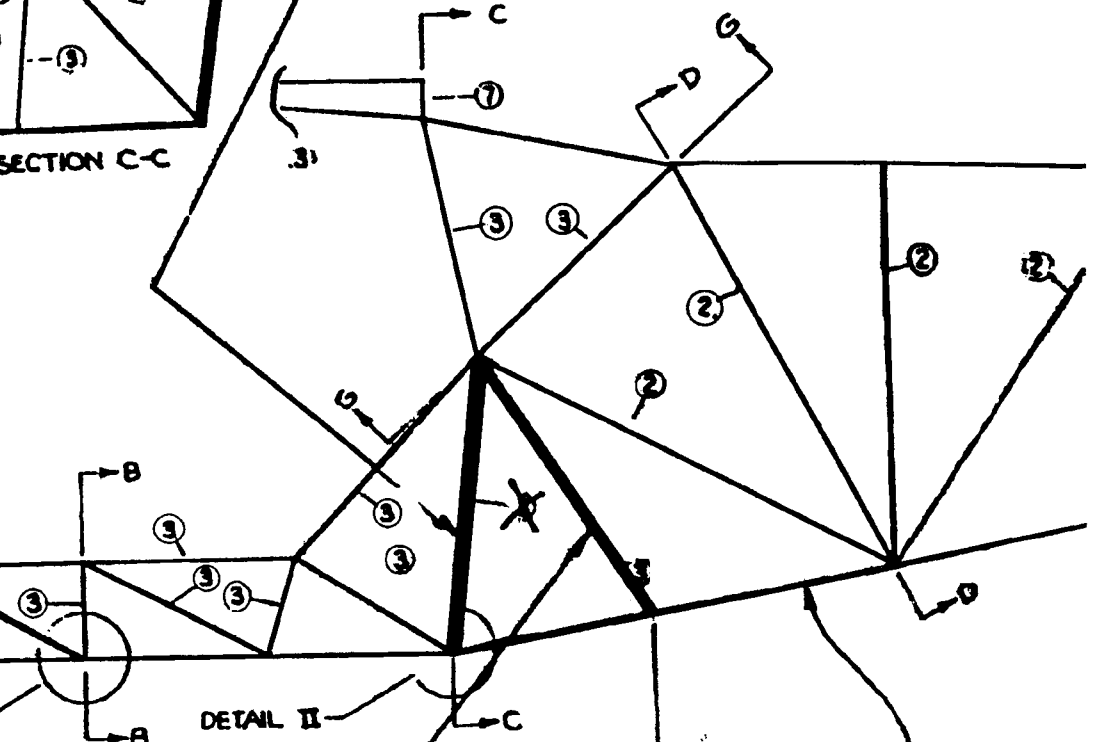
Increase Tube Diameter to 5/8" * .049"



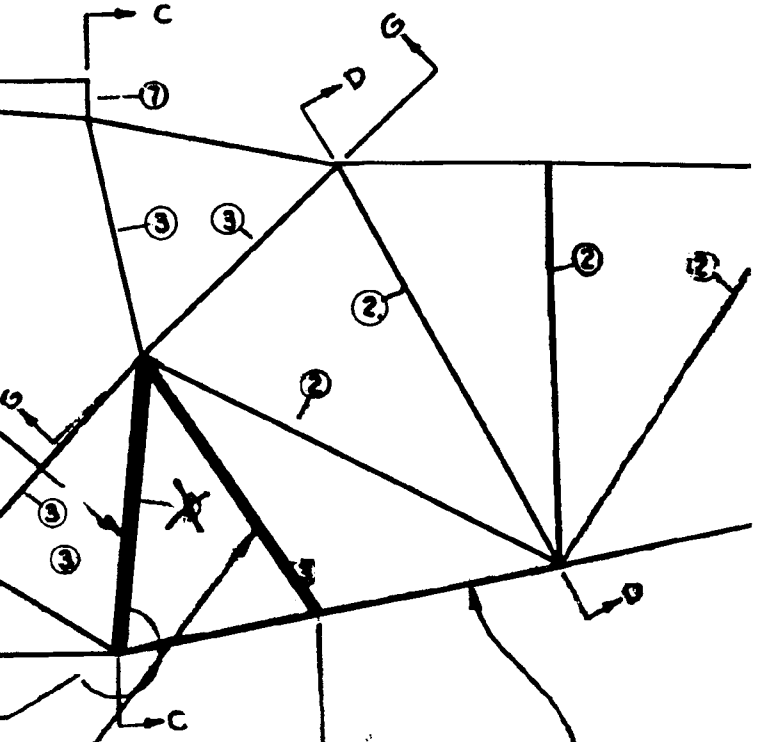
SECTION C-C



DETAIL I



DETAIL II



SIDE VIEW

Additional Tubes 3/8" * .035"

(For stabilizing the longeron Tube under compression loads)

