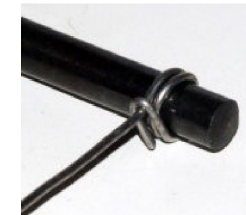
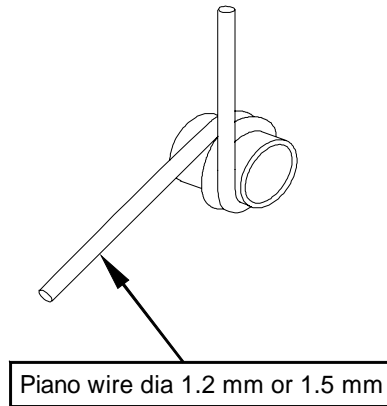
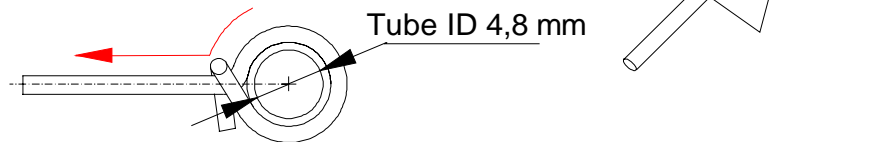
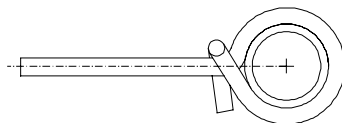


- 1 Use the cylinder little bit smaller than the tube for example 4.8 mm drill
- 2 Use a Vice on the table it is more easy to fix the first extremity of the wire and drill
- 3 turn the wire around the drill, cut the right length.
- 4 Push aside the wire turns and insert the tube
- 5 When the tube is in place fold the extremity cut and adjust this part

- 6 Bend the piano wire to the axle of the tube



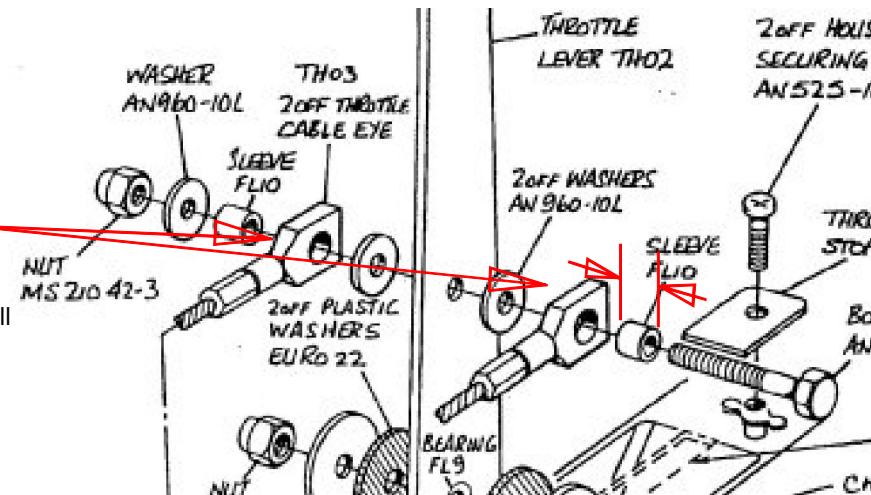
- 7 When you are satisfied, make silver brazed joint between tube and wire with a small flame



- 8 Adjust the wide of the tube as shown

- 9 With syringe introduce a graphite grease into the two sleeves it is ready to install

It is necessary to make training 1 or 2 times before to obtain the good result



WARNING: use only a gentle curves to the engine, no small angles and do not fold the wire into the sleeve