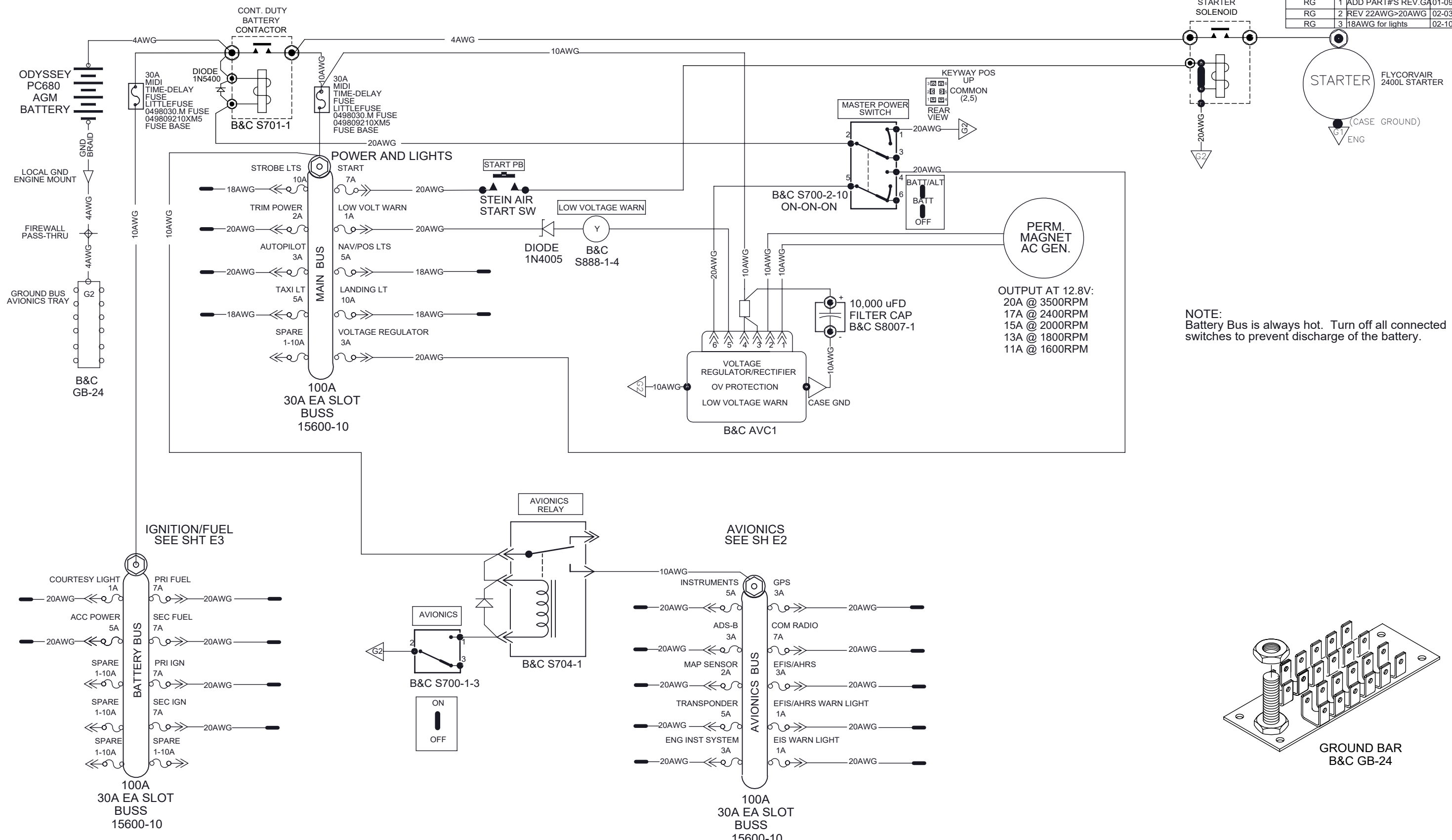
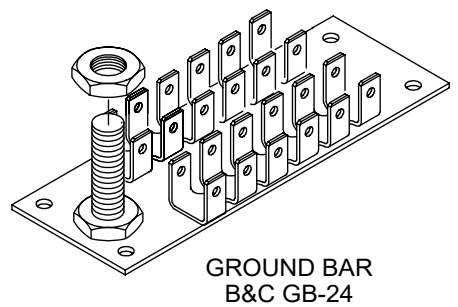


| REVISION | # | DESCRIPTION | DATE |
|----------|---|--------------------|------------|
| RG | 1 | ADD PART#'S REV.GA | 01-09-2021 |
| RG | 2 | REV 22AWG>20AWG | 02-03-2021 |
| RG | 3 | 18AWG for lights | 02-10-2021 |



OUTPUT AT 12.8V:
 20A @ 3500RPM
 17A @ 2400RPM
 15A @ 2000RPM
 13A @ 1800RPM
 11A @ 1600RPM

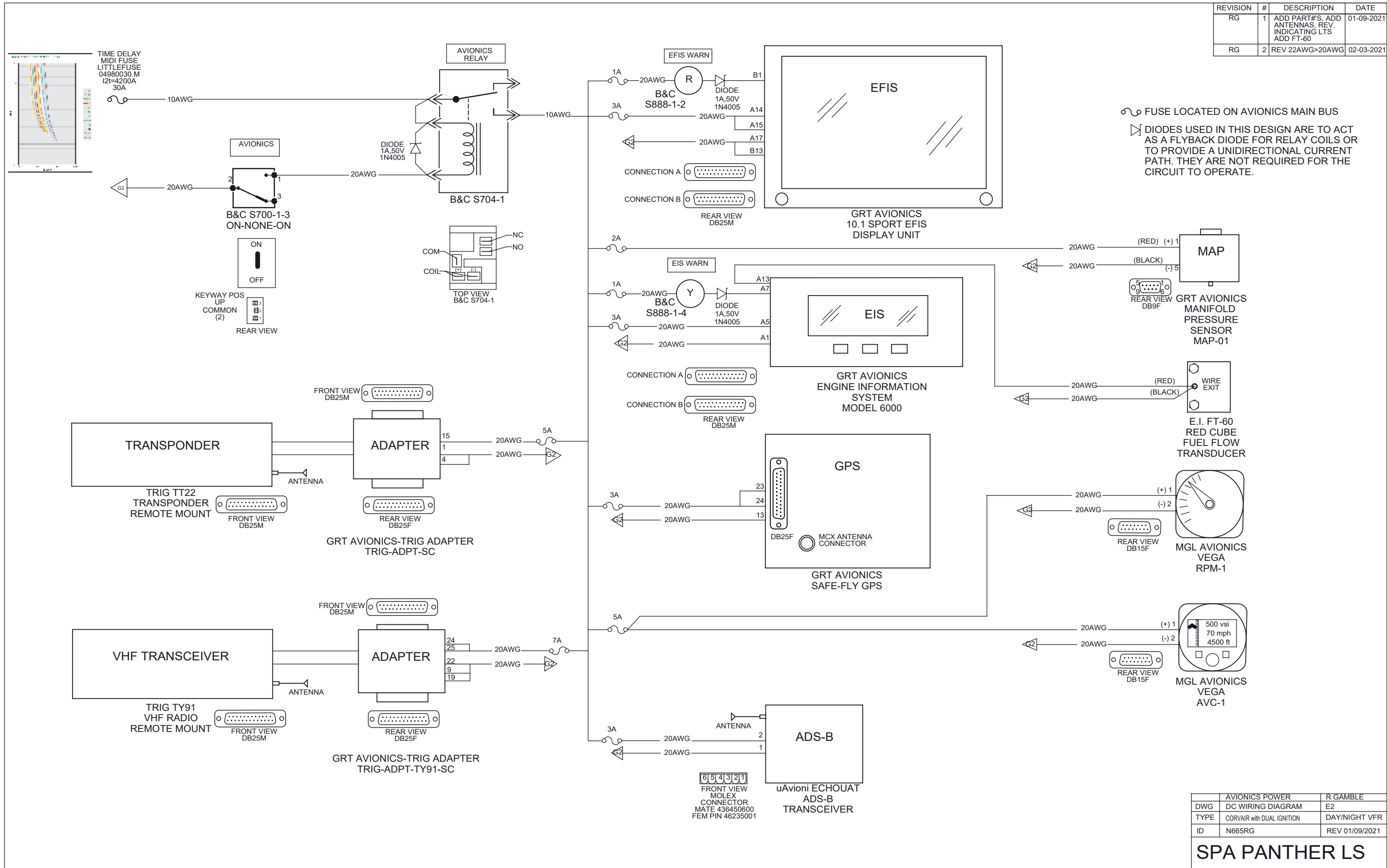
NOTE:
 Battery Bus is always hot. Turn off all connected switches to prevent discharge of the battery.



| | | |
|------|---------------------------------|----------------|
| DWG | AEROELECTRICS DWG Z-09 MODIFIED | R GAMBLE |
| TYPE | DC POWER SCHEMATIC | E1 |
| ID | CORVAIR with DUAL IGNITION | DAY/NIGHT VFR |
| | N665RG | REV 02-10-2021 |

SPA PANTHER LS

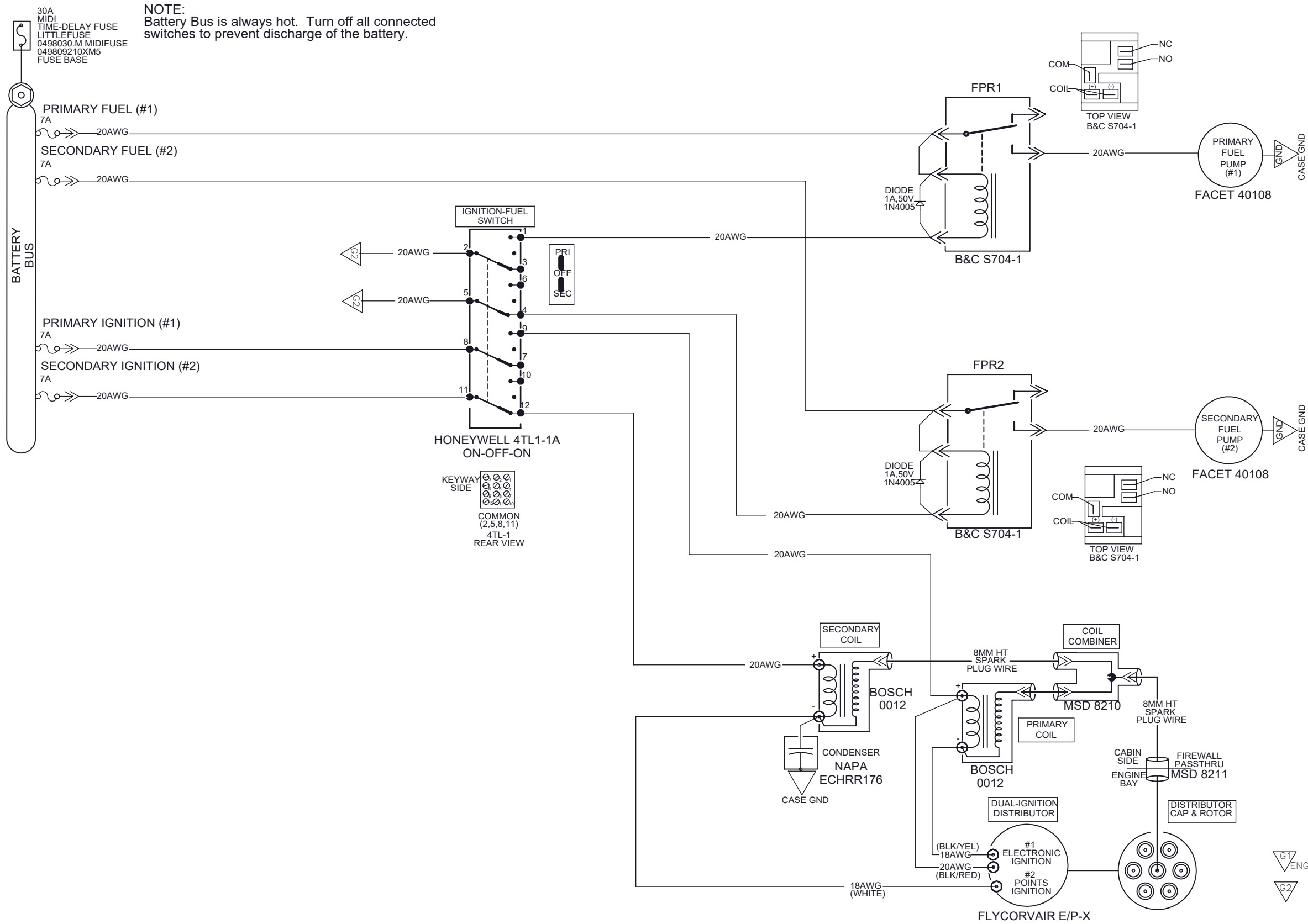
| REVISION | # | DESCRIPTION | DATE |
|----------|---|---|------------|
| RG | 1 | ADD PART#'S, ADD ANTENNAS, REV. INDICATING LTS, ADD FT-60 | 01-09-2021 |
| RG | 2 | REV 22AWG>20AWG | 02-03-2021 |



| | | |
|------|----------------------------------|----------------|
| DWG | AVIONICS POWER DC WIRING DIAGRAM | R GAMBLE |
| TYPE | CORVAIR with DUAL IGNITION | DAY/NIGHT VFR |
| ID | N665RG | REV 01/09/2021 |

SPA PANTHER LS

| REVISION | # | DESCRIPTION | DATE |
|----------|---|--------------------------|------------|
| RG | 1 | ADD DIODES, NOTE, PART#S | 01-09-2021 |
| RG | 2 | DIST WIRE SZ/CLR | 02-05-2021 |



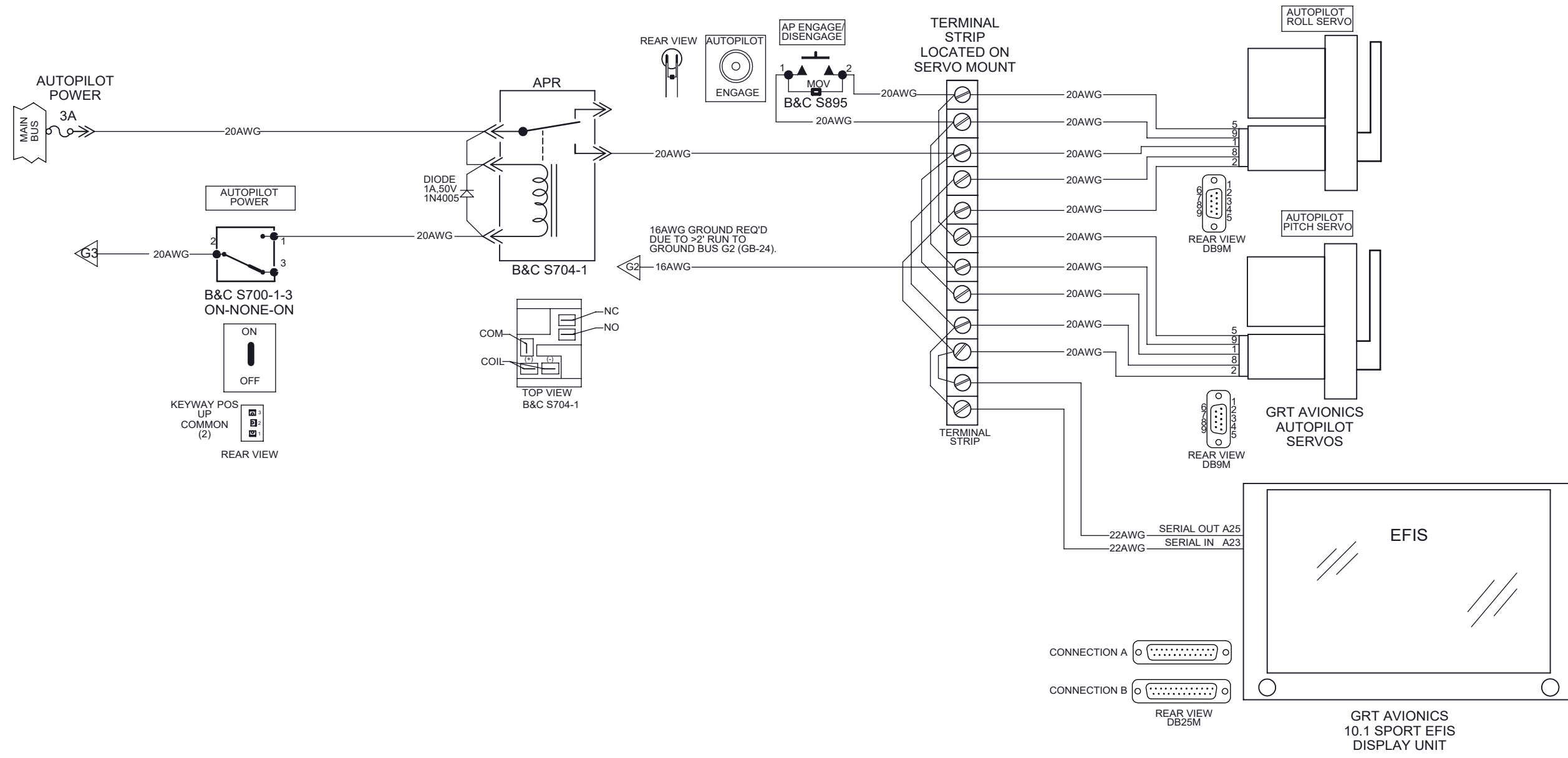
NOTE:
Battery Bus is always hot. Turn off all connected switches to prevent discharge of the battery.

ENG = ENGINE CRANKCASE GROUND
G2 = GROUND BUS

| | | |
|------|----------------------------|----------------|
| | IGNITION-FUEL POWER | R GAMBLE |
| DWG | DC WIRING DIAGRAM | E3 |
| TYPE | CORVAIR with DUAL IGNITION | DAY/NIGHT VFR |
| ID | N665RG | REV 02-05-2021 |

SPA PANTHER LS

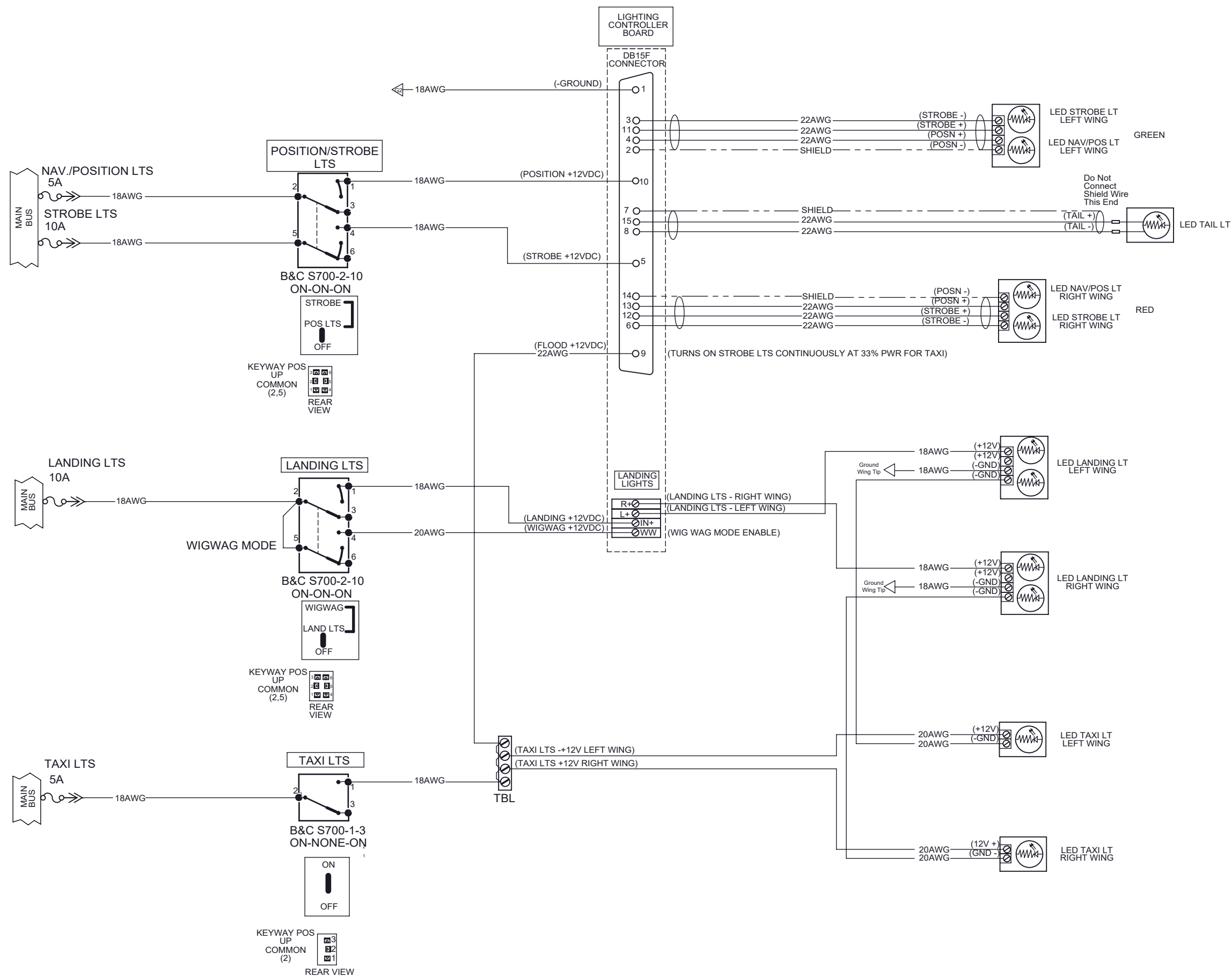
| REVISION | # | DESCRIPTION | DATE |
|----------|---|-----------------------------|------------|
| RG | 1 | ADD DIODE ADD TERM STRIP | 01-09-2021 |



| | | |
|------|----------------------------|----------------|
| | AUTOPILOT PWR&CTL | R GAMBLE |
| DWG | DC WIRING DIAGRAM | E4 |
| TYPE | CORVAIR with DUAL IGNITION | DAY/NIGHT VFR |
| ID | N665RG | REV 01/09/2021 |

SPA PANTHER LS

| REVISION | # | DESCRIPTION | DATE |
|----------|---|-----------------------------------|------------|
| RG | 1 | REV WIRE GA, REV WIRING TO LIGHTS | 01-09-2021 |
| RG | 2 | REV WIRING TO LIGHTS, +PICS | 01-29-2021 |
| RG | 3 | REV WIRING SIZES | 02-03-2021 |

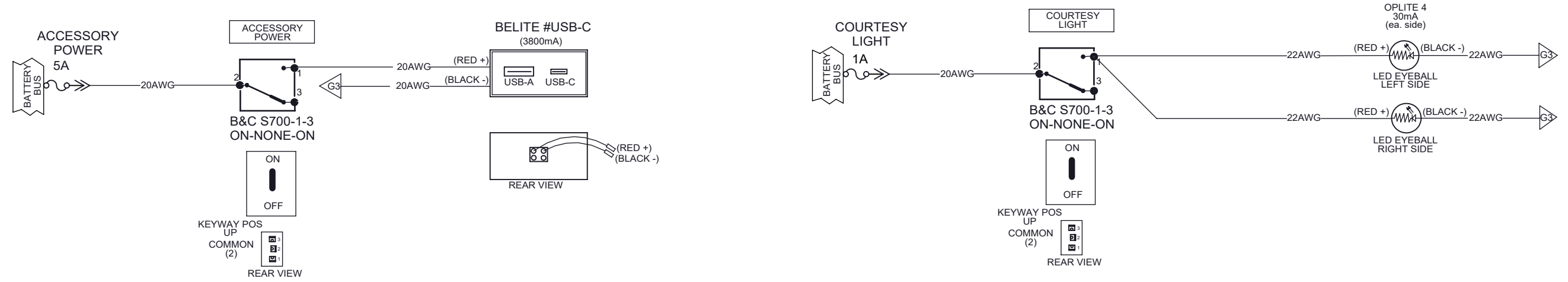


- NOTES:
- The Lighting system is mfg by FlyLEDs
 - DB15F Connector Pin on Controller Board
 - ⊙ Screw Terminal on Board
 - ⊙ Screw Terminal on Terminal Block Strip
 - ⊞ Butt Connector at Tail Light

| | | |
|------|----------------------------|----------------|
| | AIRCRAFT LIGHTING | R GAMBLE |
| DWG | DC WIRING DIAGRAM | E5 |
| TYPE | CORVAIR with DUAL IGNITION | DAY/NIGHT VFR |
| ID | N665RG | REV 02-03-2021 |

SPA PANTHER LS

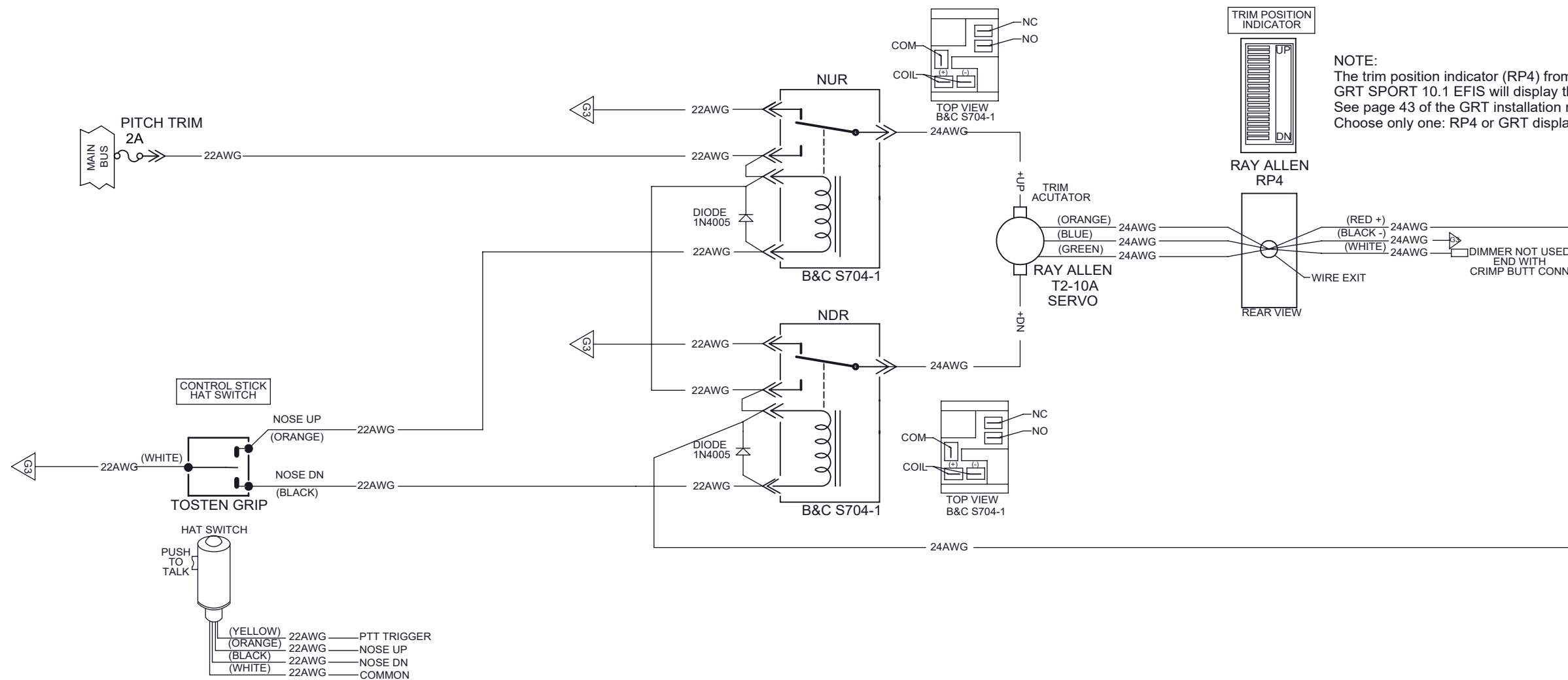
| REVISION | # | DESCRIPTION | DATE |
|----------|---|------------------|------------|
| RG | 1 | REV DWG TO CABIN | 01-09-2021 |
| RG | 2 | REMOVE RELAY | 01-29-2021 |



| | | |
|------|----------------------------|----------------|
| | LANDING/TAXI LTS | R GAMBLE |
| DWG | DC WIRING DIAGRAM | E6 |
| TYPE | CORVAIR with DUAL IGNITION | DAY/NIGHT VFR |
| ID | N665RG | REV 01/29/2021 |

SPA PANTHER LS

| REVISION | # | DESCRIPTION | DATE |
|----------|---|-------------------|------------|
| RG | 1 | ADD DIODE REM LTS | 01-09-2021 |

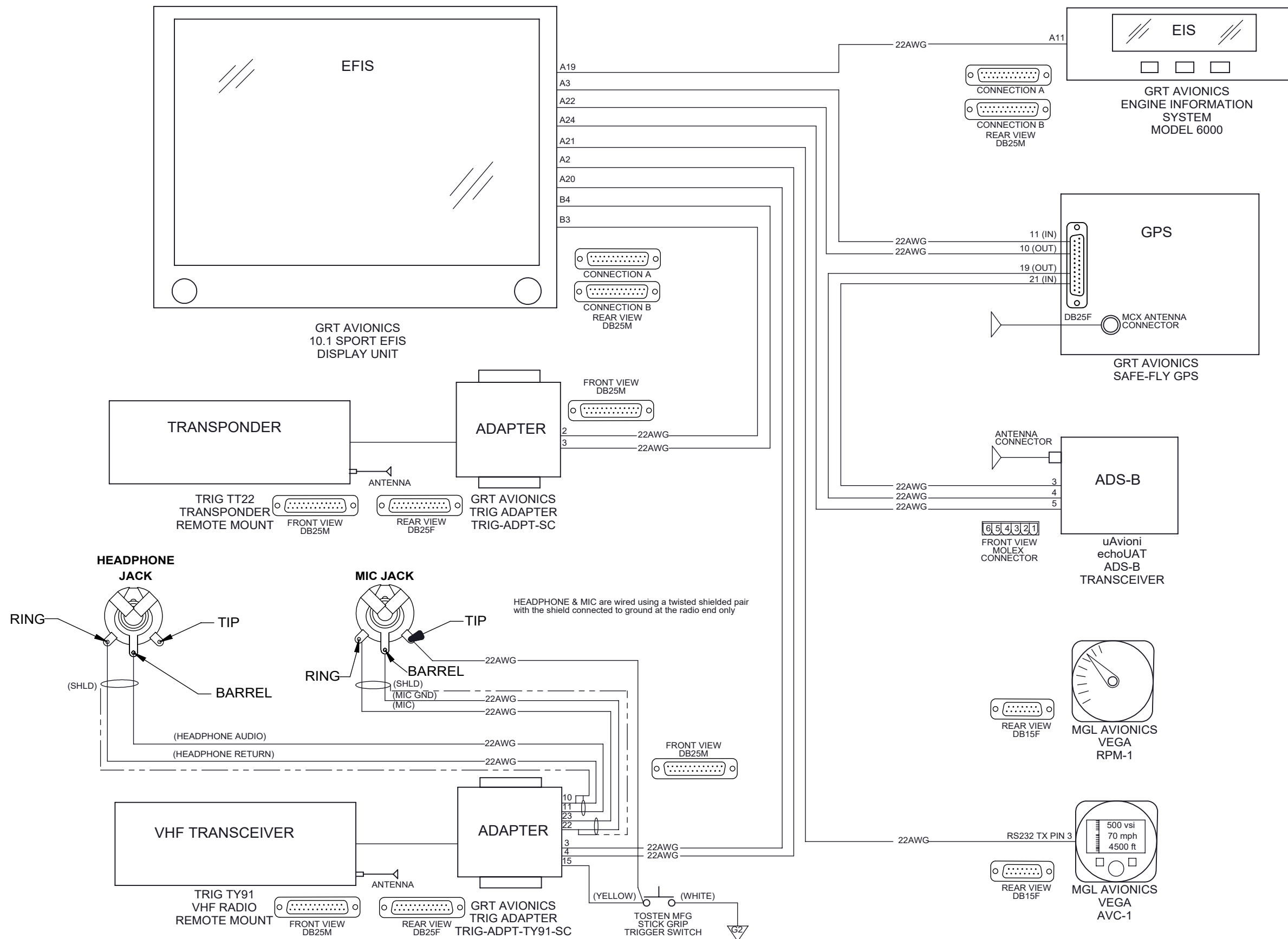


NOTE:
The trim position indicator (RP4) from Ray Allen is shown. GRT SPORT 10.1 EFIS will display the trim position if desired. See page 43 of the GRT installation manual for information. Choose only one: RP4 or GRT display.

| | | |
|------|----------------------------|----------------|
| | TRIM SYSTEM POWER | R GAMBLE |
| DWG | DC WIRING DIAGRAM | E7 |
| TYPE | CORVAIR with DUAL IGNITION | DAY/NIGHT VFR |
| ID | N665RG | REV 01/09/2021 |

SPA PANTHER LS

| REVISION | # | DESCRIPTION | DATE |
|----------|---|-------------------|------------|
| RG | 1 | ADD MIC & PH JACK | 01/20/2021 |

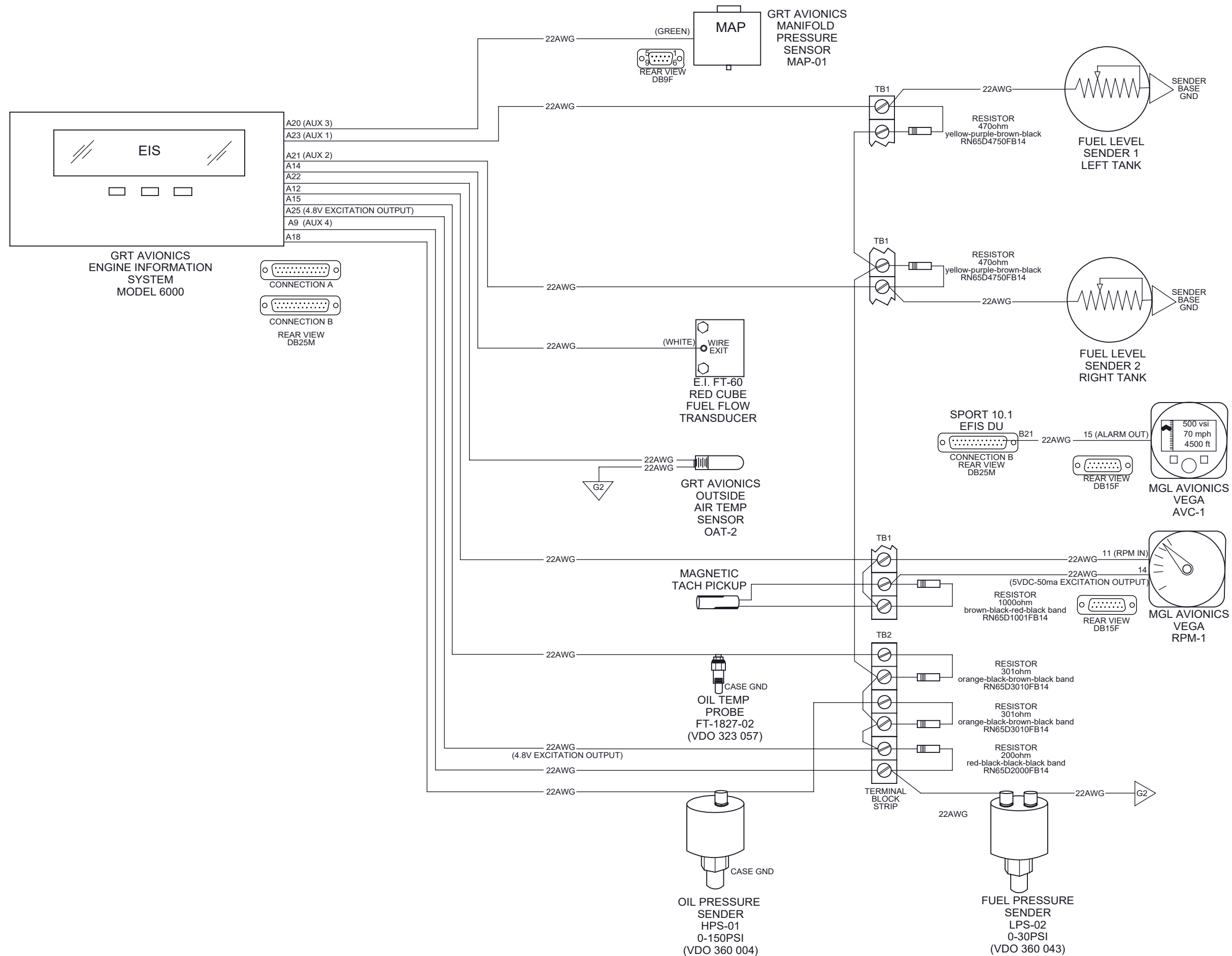


NOTES:
 -Autopilot servo serial connections are shown on Sht. E4.
 -Device power and ground connections are shown on Sht. E2.

| AVIONICS INTERCONNECTS R GAMBLE | | |
|---------------------------------|----------------------------|----------------|
| DWG | DC WIRING DIAGRAM | E8 |
| TYPE | CORVAIR with DUAL IGNITION | DAY/NIGHT VFR |
| ID | N665RG | REV 01-20-2021 |

SPA PANTHER LS

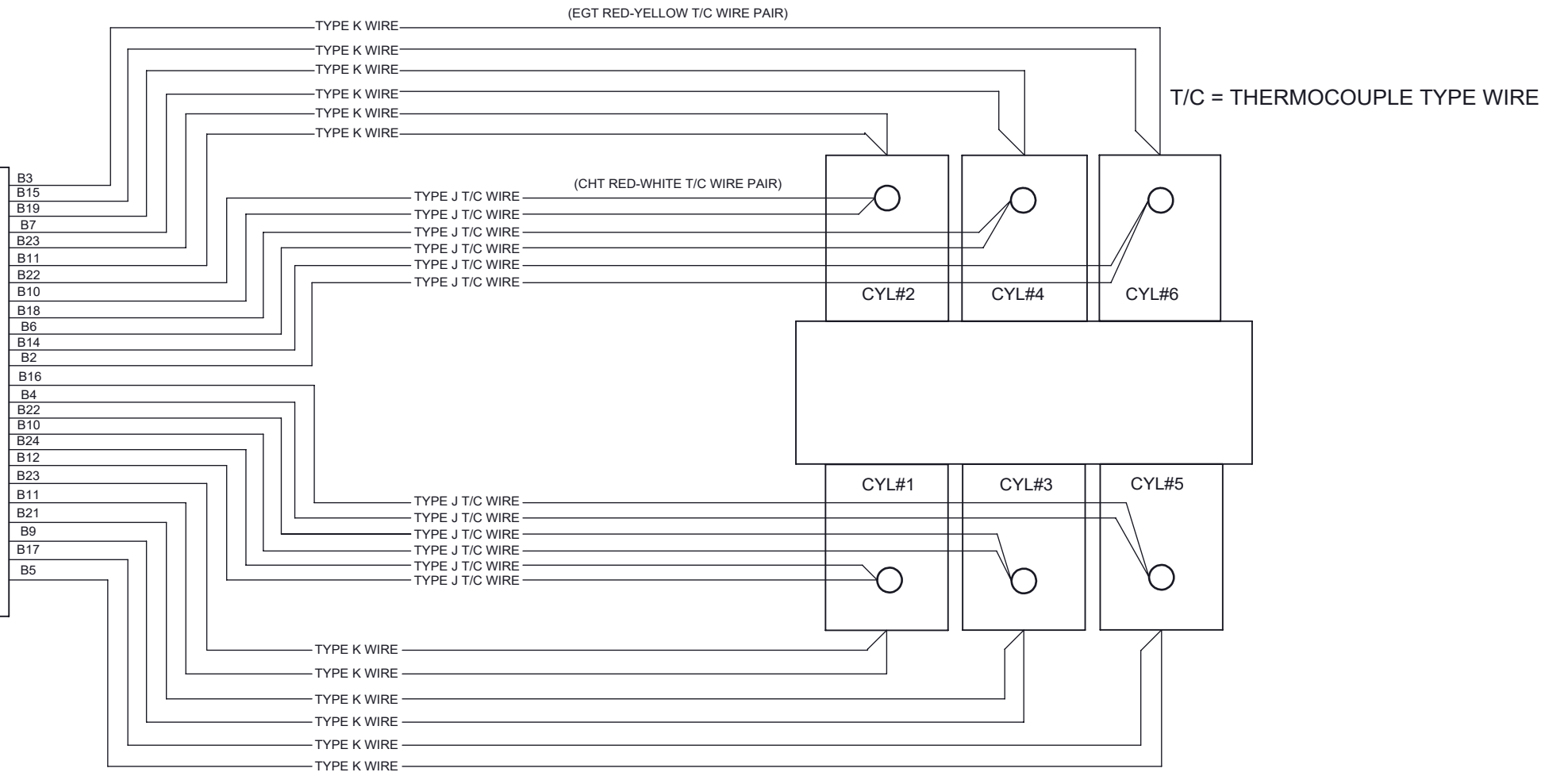
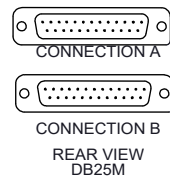
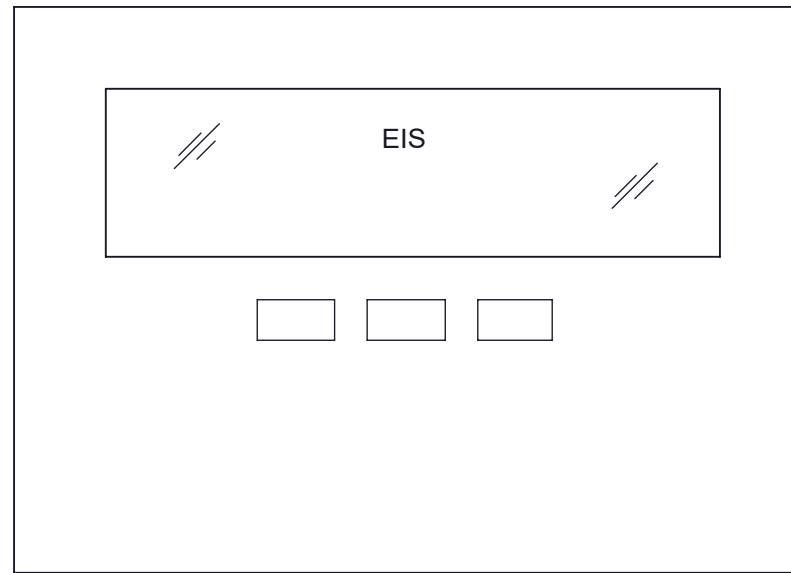
| REVISION | # | DESCRIPTION | DATE |
|----------|---|--|------------|
| RG | 1 | ADD PART#S, ADD RESISTOR TO HPS, CORRECT RES | 01-09-2021 |



| DWG | EIS CONNECTOR A WIRING | R GAMBLE |
|------|----------------------------|----------------|
| TYPE | DC WIRING DIAGRAM | E9 |
| ID | CORVAIR with DUAL IGNITION | DAY/NIGHT VFR |
| | N665RG | REV 01-09-2021 |

SPA PANTHER LS

GRT AVIONICS
ENGINE INFORMATION
SYSTEM
MODEL 6000



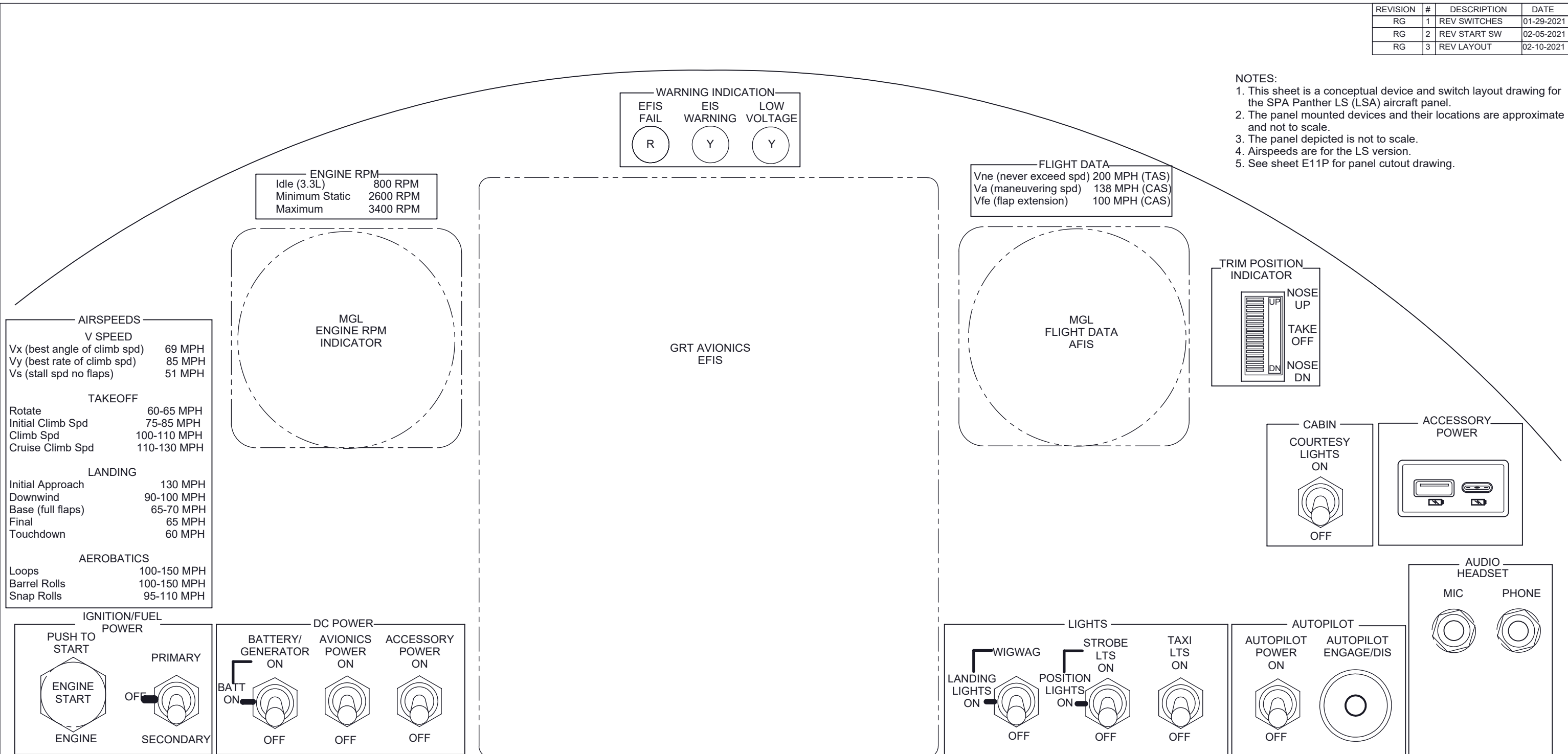
GRT AVIONICS
EGT PART#EGT-HCS-01
CHT PART#CHT-14-01

| | | |
|------|----------------------------|----------------|
| | EIS CONNECTOR B WIRING | R GAMBLE |
| DWG | DC WIRING DIAGRAM | E 10 |
| TYPE | CORVAIR with DUAL IGNITION | DAY/NIGHT VFR |
| ID | N665RG | REV 12-15-2020 |

SPA PANTHER LS

| REVISION | # | DESCRIPTION | DATE |
|----------|---|--------------|------------|
| RG | 1 | REV SWITCHES | 01-29-2021 |
| RG | 2 | REV START SW | 02-05-2021 |
| RG | 3 | REV LAYOUT | 02-10-2021 |

- NOTES:
1. This sheet is a conceptual device and switch layout drawing for the SPA Panther LS (LSA) aircraft panel.
 2. The panel mounted devices and their locations are approximate and not to scale.
 3. The panel depicted is not to scale.
 4. Airspeeds are for the LS version.
 5. See sheet E11P for panel cutout drawing.



| | LOCATION & ARTWORK | R GAMBLE |
|------|----------------------------|----------------|
| DWG | PANEL LAYOUT DWG | E11 |
| TYPE | CORVAIR with DUAL IGNITION | DAY/NIGHT VFR |
| ID | N665RG | REV 02-10-2021 |

SPA PANTHER LS