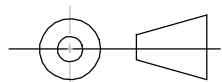
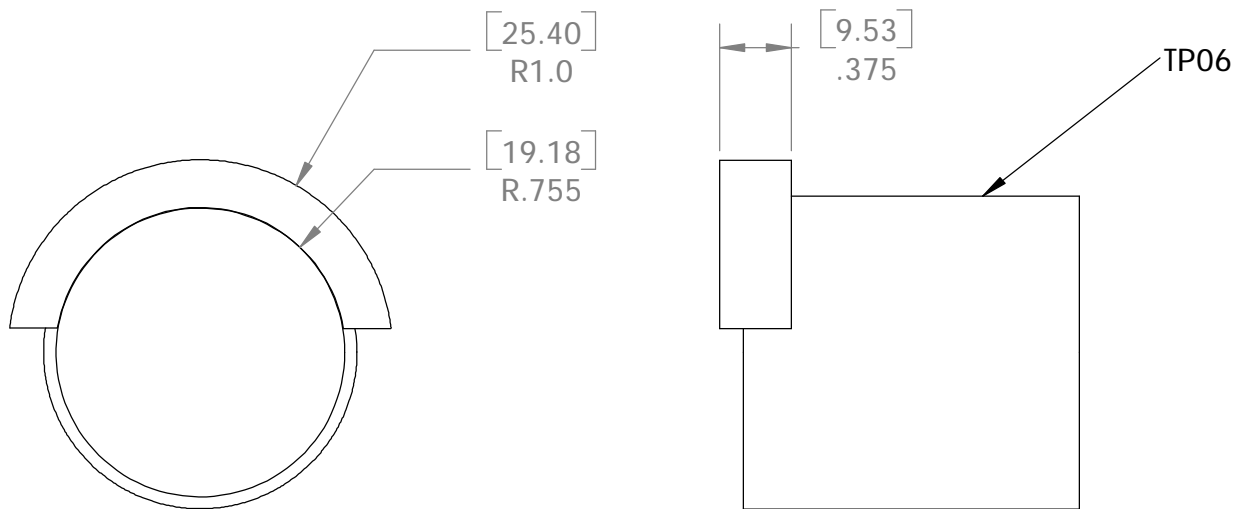
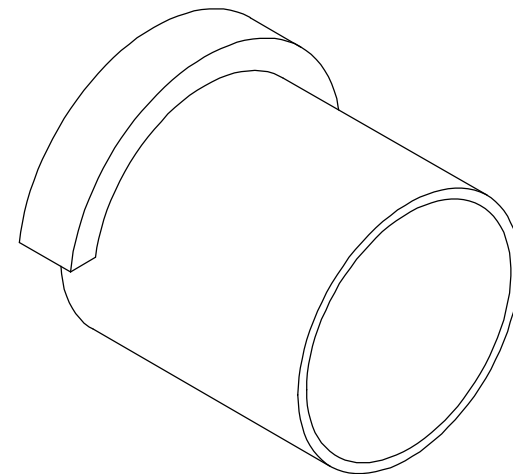


With mandrel in place assemble retainer to TP06 in the same fashion as for the factory's procedure for Mod 73. Assembly is facilitated by holding the retainer to TP06 with five minute epoxy or hot glue.

Make retainer from tubular aluminum cut to size - then cut in half to make two retainers.



THIRD ANGLE PROJECTION USED

DO NOT SCALE DRAWING

DRAWN BY: R. HOUSMAN
DATE: 3/4/2008

UNLESS OTHERWISE SPECIFIED
DIMENSIONS ARE IN INCHES

TOLERANCES:
ANGULAR: ± 0.5 DEG.
TWO PLACE DECIMAL ± 0.02
THREE PLACE DECIMAL ± 0.005



TITLE:

SIZE
A

SOLIDWORKS FILENAME
Retainer on TP06

SHEET 1
OF 1